

DXB-500/10 (Hydraulic Motor Driven)

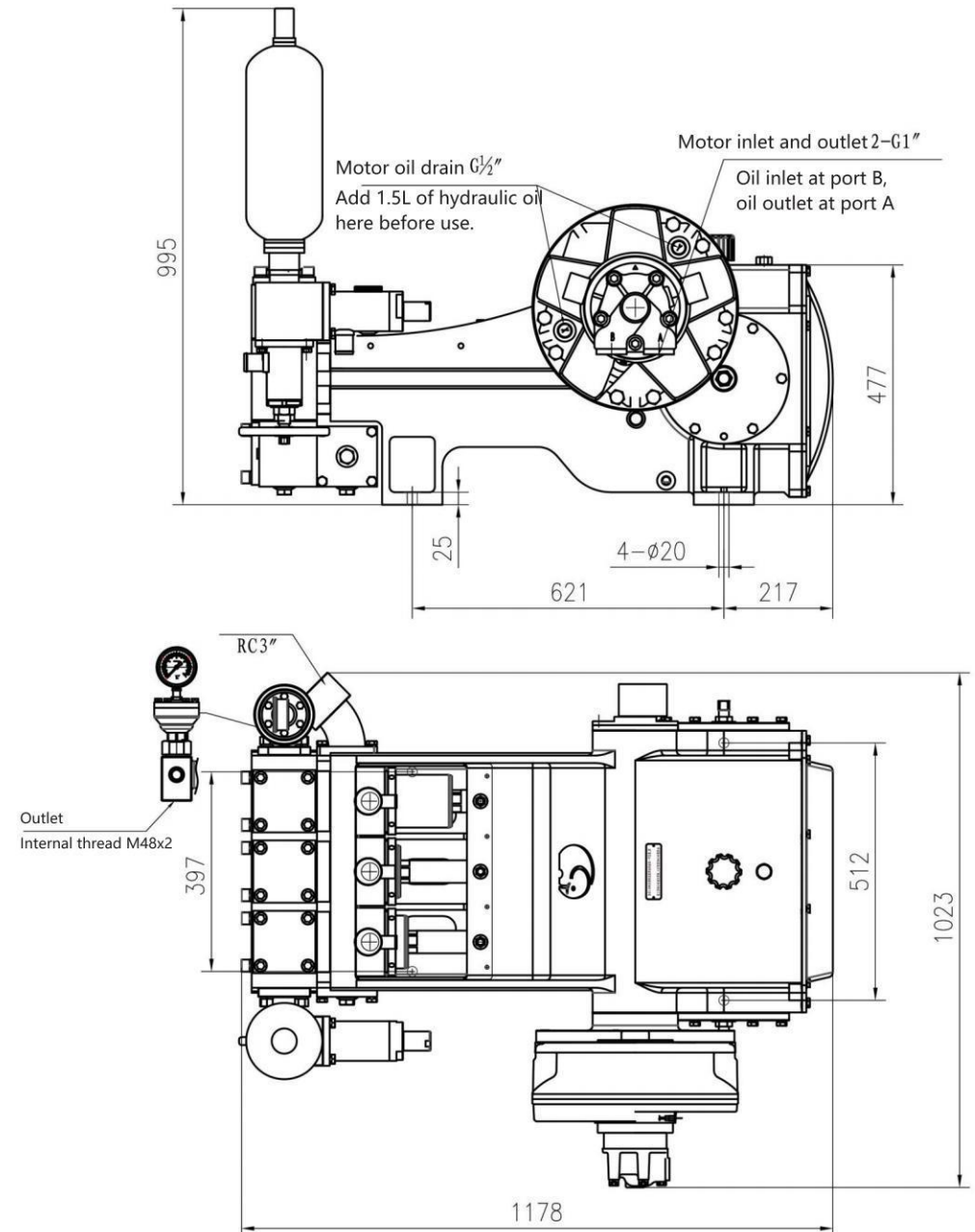


The DXB-500/10 reciprocating pump is a horizontal triplex reciprocating single-acting plunger pump. It is driven by a high-displacement hydraulic motor and mainly used for matching with tunnel drilling machines. It can also be used for other purposes such as grouting, mine drainage, and long-distance water delivery. This pump can adjust the flow rate by remote hydraulic motor flow control, changing the traditional manual shifting operating mode. The pump adopts new concepts and structures. The one-way valve uses Vanaar (with high volumetric efficiency and low working noise), with a compact structure, beautiful appearance, convenient installation and maintenance, long service life of vulnerable parts and stable performance.

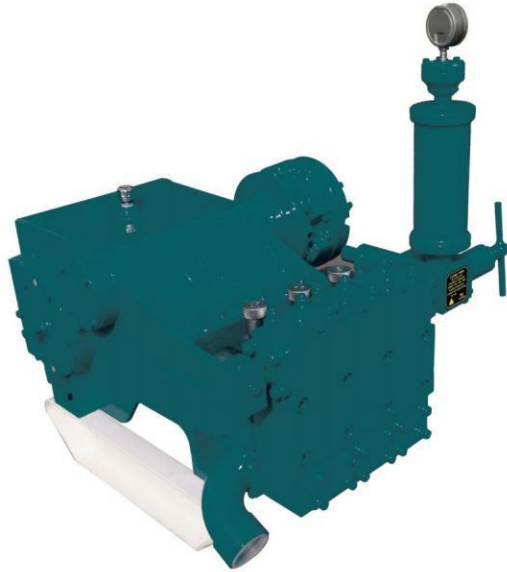
Horizontal triplex reciprocating single acting piston pump		
Stroke (mm)		135
Cylinder diameter (mm)		100
Flow (L/min)		500
Pressure (MPa)		10
Input speed (r/min)		700
Input power (KW)		100
Dimensions (mm)		1178 × 1023 × 995
Weight (kg)		850
Hydraulic motor model		SAI 4-400
Hydraulic motor pressure (MPa)		23
Maximum motor flow (L/min)		300

The product specifications and images provided may change due to design improvements and upgrades. Please feel free to inquire for more information.

DXB-500/10 Outline Dimension Drawing



DXB-600 (Hydraulic Motor Driven)

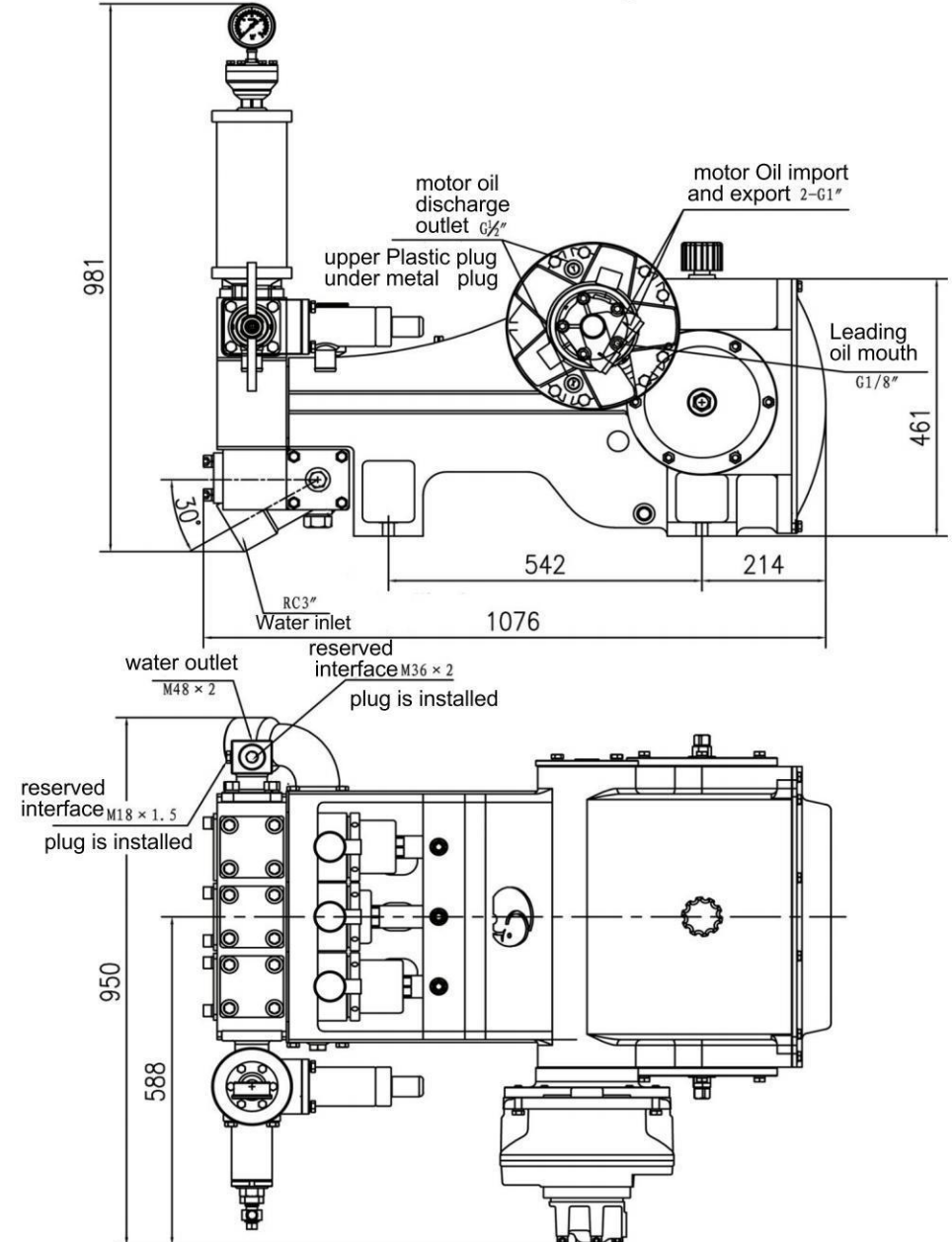


The DXB-600 reciprocating pump is a horizontal triplex reciprocating single-acting plunger pump, driven by a dual displacement hydraulic motor. It is mainly used in conjunction with non-excavation drilling rigs weighing around 70 tons, and can also be used for other purposes such as grouting, mine drainage, and long distance water delivery. The pump has two flow rates and two pressures, and shifting operations are achieved by remote adjustment of the hydraulic motor flow rate, changing the traditional manual shifting mode. The pump adopts a new concept and structure; the one-way valve adopts a Vannell design (with high volumetric efficiency and low working noise), with a compact structure and beautiful appearance, easy installation and maintenance, long service life for vulnerable parts, and stable performance.

Horizontal triplex reciprocating single acting piston pump		
Stroke (mm)	110	
Cylinder diameter (mm)	95	
Flow (L/min)	600	300
Pressure (MPa)	4	8
Input speed (r/min)	880	440
Input power (KW)	48	
Dimensions (mm)	1085×950×981	
Weight (kg)	710	
Hydraulic motor model	SA12-350-170	
Hydraulic motor pressure (MPa)	20	
Maximum motor flow (L/min)	170	

The product specifications and images provided may change due to design improvements and upgrades. Please feel free to inquire for more information.

DXB-600 Outline Dimension Drawing



DXBH-600 (Hydraulic Motor Driven)

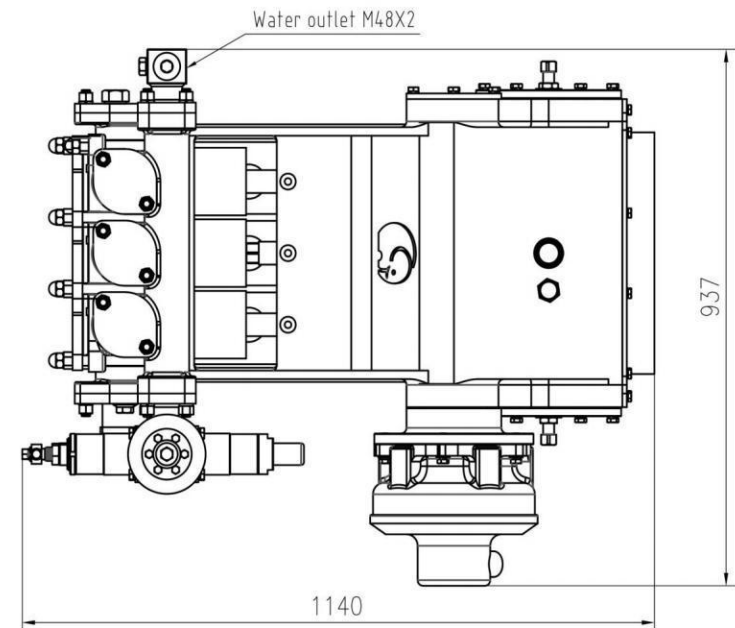
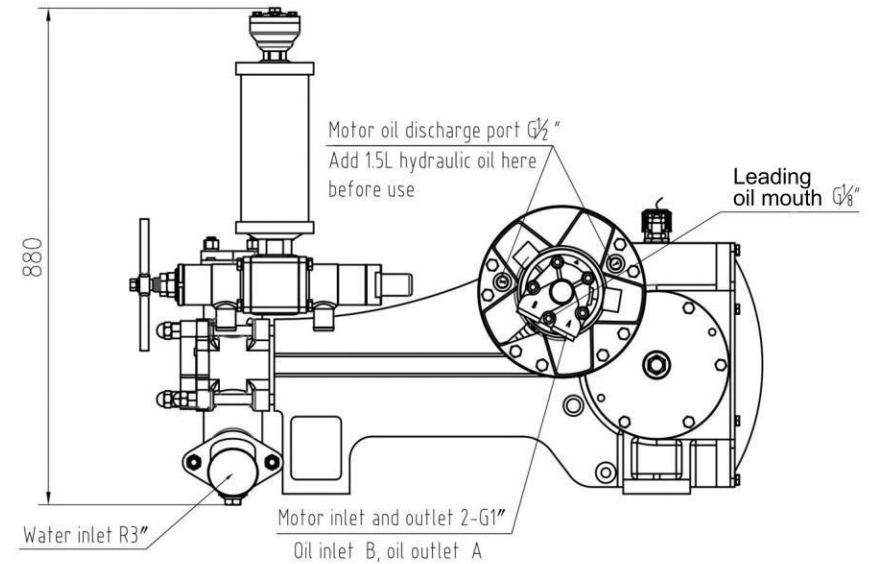


The DXBH-600 reciprocating pump is a horizontal, triplex, single-acting piston pump that uses a double-displacement hydraulic motor drive. It is mainly used in conjunction with non-excavation drilling rigs weighing around 50 tons, but can also be used for other purposes such as injection grouting, mine drainage, and long-distance water delivery. The pump has two flow rates and two pressures, and the shifting operation is achieved by remotely adjusting the hydraulic motor flow rate, changing the traditional manual shifting operation mode. This pump adopts new concepts and new structures; it has a compact structure, beautiful appearance, easy installation and maintenance, and longer life for vulnerable parts with stable performance.

Horizontal triplex reciprocating single acting piston pump		
Stroke (mm)	110	
Cylinder diameter (mm)	100	
Flow (L/min)	600	300
Pressure (MPa)	4	8
Input speed (r/min)	928	464
Input power (KW)	48	
Dimensions (mm)	1140 × 937 × 880	
Weight (kg)	635	
Hydraulic motor model	2-350-170	
Hydraulic motor pressure (MPa)	21	
Maximum motor flow (L/min)	180	

The product specifications and images provided may change due to design improvements and upgrades. Please feel free to inquire for more information.

DXBH-600 Outline Dimension Drawing



DXB-800 (Hydraulic Motor Driven)

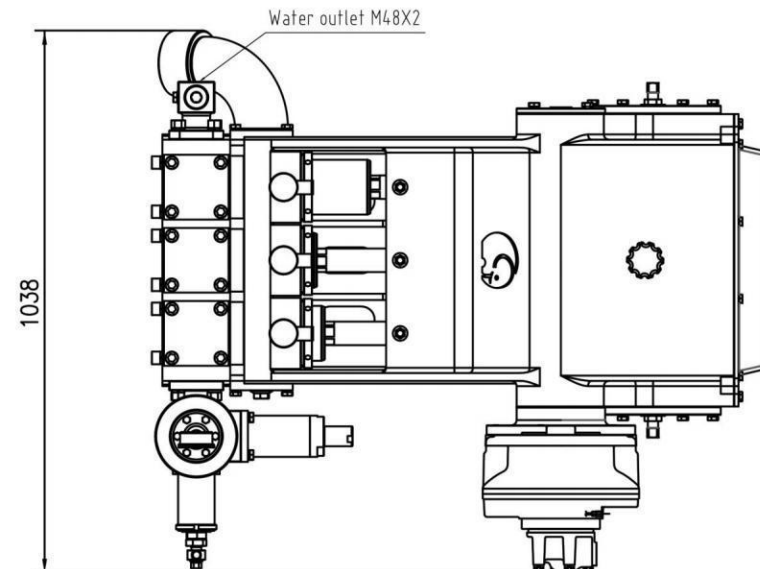
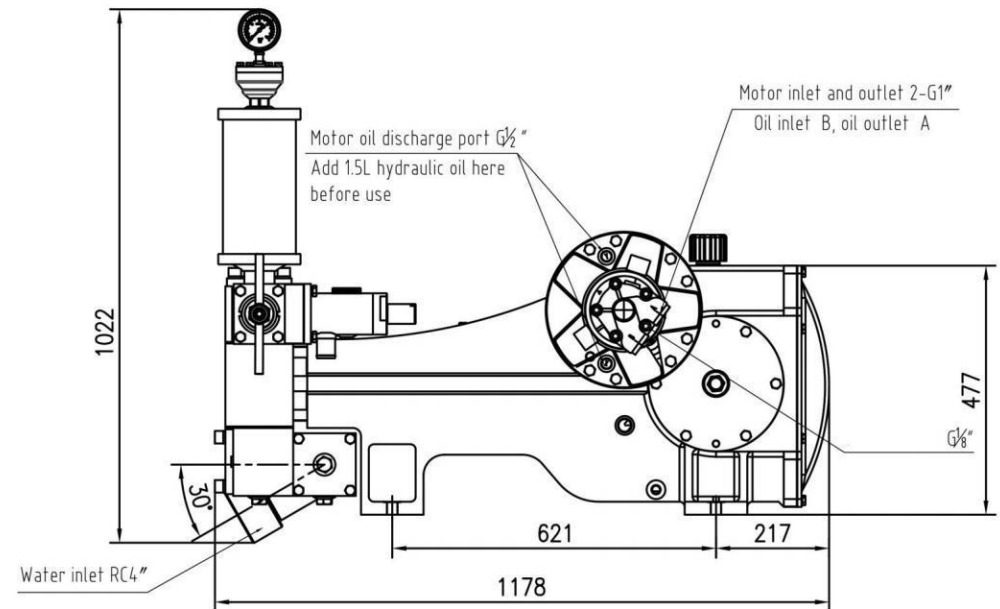


The DXB-800 reciprocating pump is a horizontal triplex reciprocating single-acting plunger pump, driven by a dual-displacement hydraulic motor. It is mainly used in conjunction with non-excavation drilling rigs of about 80 tons, as well as for other purposes such as grouting, mine drainage, and long-distance water delivery. The pump has two flow rates and two pressures, which can be achieved by remotely adjusting the hydraulic motor flow to achieve gear shifting operations, changing the traditional manual gear shifting operation mode. The pump adopts a new concept and new structure; the one-way valve adopts Vane (high volumetric efficiency, low working noise), compact structure, beautiful appearance, easy installation and maintenance, long service life of vulnerable parts, and stable performance.

Horizontal triplex reciprocating single acting piston pump		
Stroke (mm)	135	
Cylinder diameter (mm)	105	
Flow (L/min)	800	400
Pressure (MPa)	4	8
Input speed (r/min)	1170	585
Input power (KW)	64	
Dimensions (mm)	1178 × 1038 × 1022	
Weight (kg)	820	
Hydraulic motor model	SAI2-350-170	
Hydraulic motor pressure (MPa)	20	
Maximum motor flow (L/min)	220	

The product specifications and images provided may change due to design improvements and upgrades. Please feel free to inquire for more information.

DXB-800 Outline Dimension Drawin



DXBH-800 (Hydraulic Motor Driven)

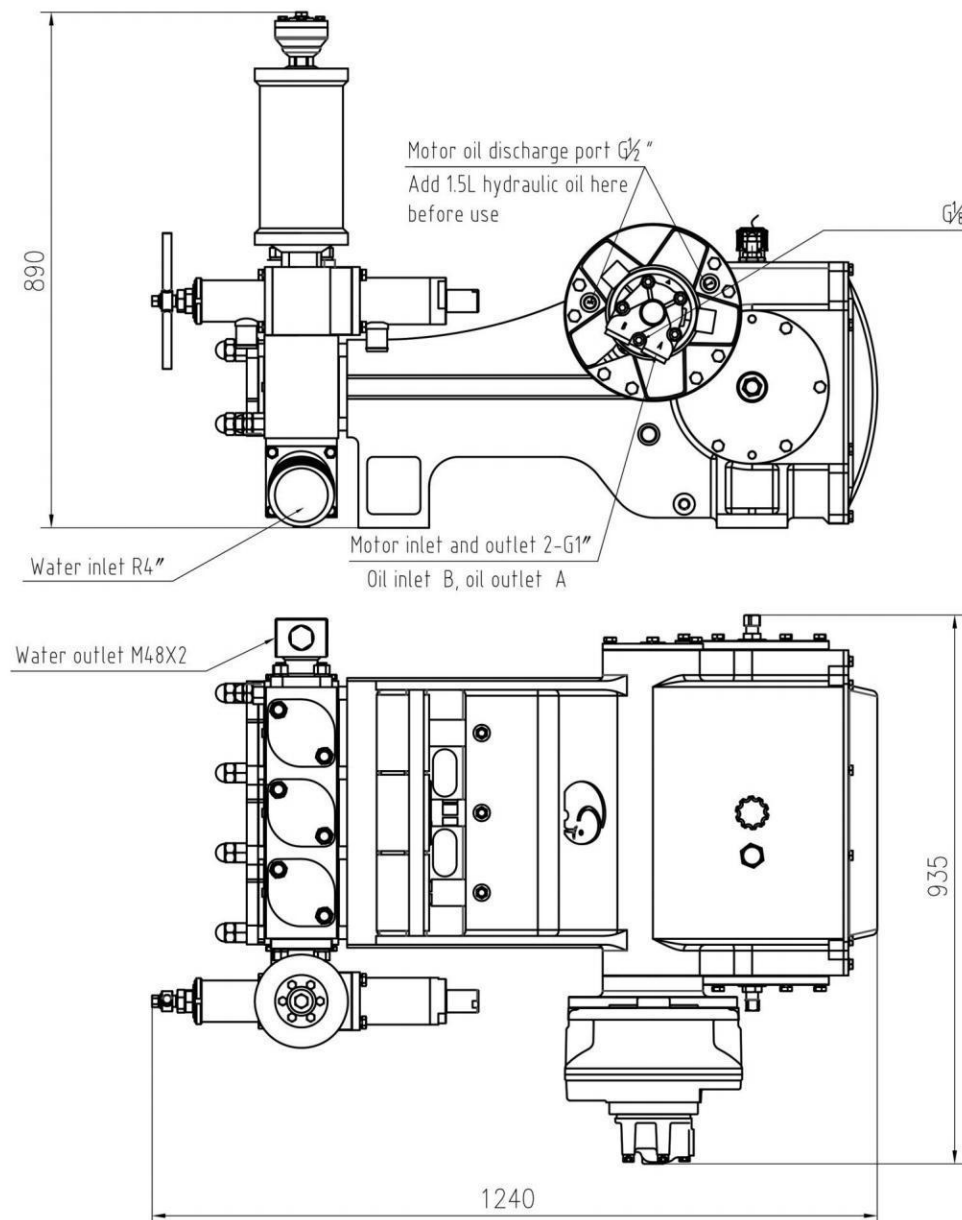


The DXBH-800 reciprocating pump is a horizontal triplex single-acting piston pump that uses a dual displacement hydraulic motor for driving. It is mainly used in conjunction with non-excavation drilling machines of around 65 tons, and can also be used for other applications such as grouting, mine drainage, and long-distance water delivery. The pump has two flow rates and two pressures, which can be changed by remote adjustment of the hydraulic motor flow, enabling shift operations and changing the traditional manual shift mode. The pump employs a new concept and structure, featuring compact design, attractive appearance, convenient installation and maintenance, long life for vulnerable parts, and stable performance.

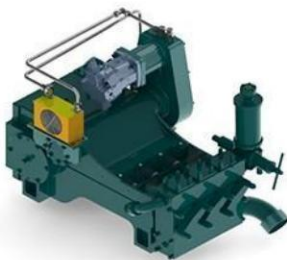
Horizontal triplex reciprocating single acting piston pump		
Stroke (mm)	110	
Cylinder diameter (mm)	110	
Flow (L/min)	800	400
Pressure (MPa)	4	8
Input speed (r/min)	1200	600
Input power (KW)	64	
Dimensions (mm)	1240 × 935 × 890	
Weight (kg)	730	
Hydraulic motor model	2-350-170	
Hydraulic motor pressure (MPa)	21	
Maximum motor flow (L/min)	230	

The product specifications and images provided may change due to design improvements and upgrades. Please feel free to inquire for more information.

DXBH-800 Outline Dimension Drawing



DXBH-1000Y

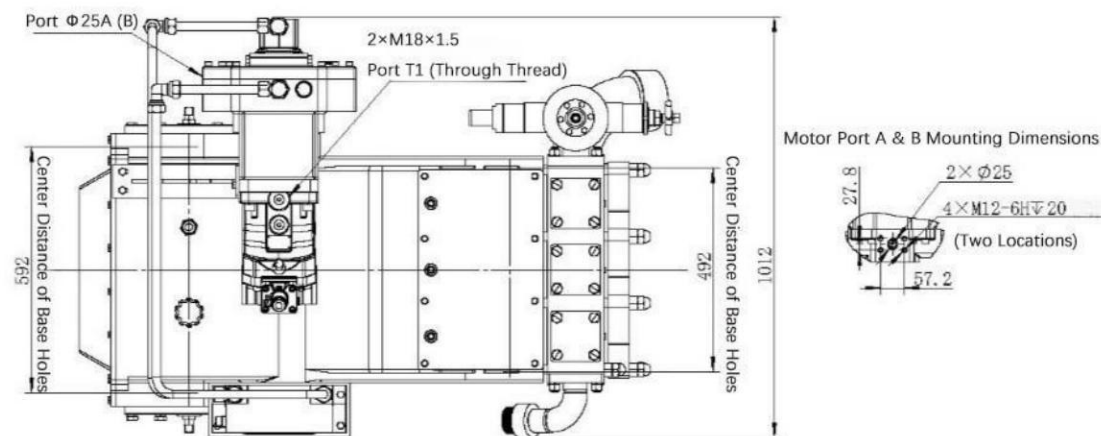
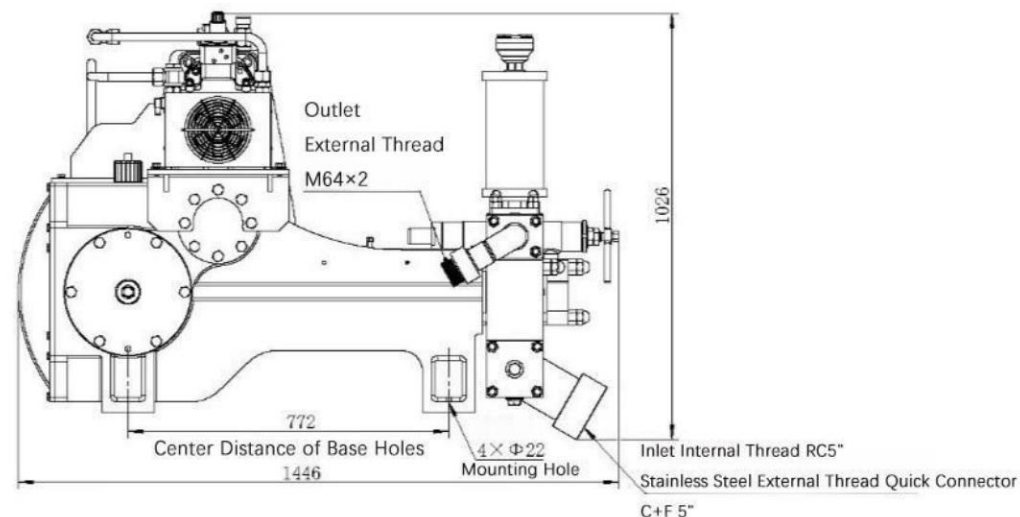


The DXBH-1000Y reciprocating pump is a horizontal triplex single-acting piston pump driven by a dual-displacement hydraulic motor. It is primarily designed for use with 100-ton trenchless drilling rigs but can also be employed in other applications such as grouting, mine drainage, and long-distance water delivery. This pump features two flow rates and two pressure levels, enabling gear shifting operations through remote adjustment of the hydraulic motor's flow rate, replacing traditional manual shifting methods. With innovative design and advanced structure, the pump incorporates high-efficiency poppet valves (offering high volumetric efficiency and low operational noise). It boasts a compact design, aesthetically pleasing appearance, easy installation and maintenance, extended service life for wear-prone components, and stable performance.

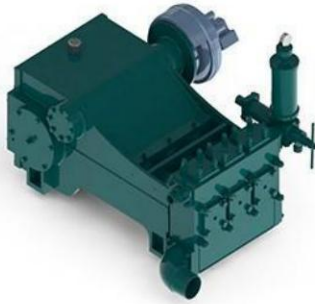
Horizontal triplex reciprocating single acting piston pump	
Stroke(mm)	140
Cylinder diameter(mm)	115
Pump speed(r/min)	232 116
Flow(L/min)	1000 500
Pressure(Mpa)	4 8
Motor speed (r/min)	4600 3000
Maximum suction height (m)	107 55
Input power(Kw)	80
Inlet connection	Rc 5" Quick Connect
Outlet connection	M64 x 2
Dimensions(mm)	1446 x 1012 x 1026
Weight(kg)	1281
Hydraulic motor model	L6VM107E22/63W-VZB020B-0550
Hydraulic motor rated pressure (MPa)	35
Maximum motor flow(L/min)	321

The product specifications and images provided may change due to design improvements and upgrades. Please feel free to inquire for more information.

DXBH-1000Y Outline Dimension Drawing



DXBH-1200

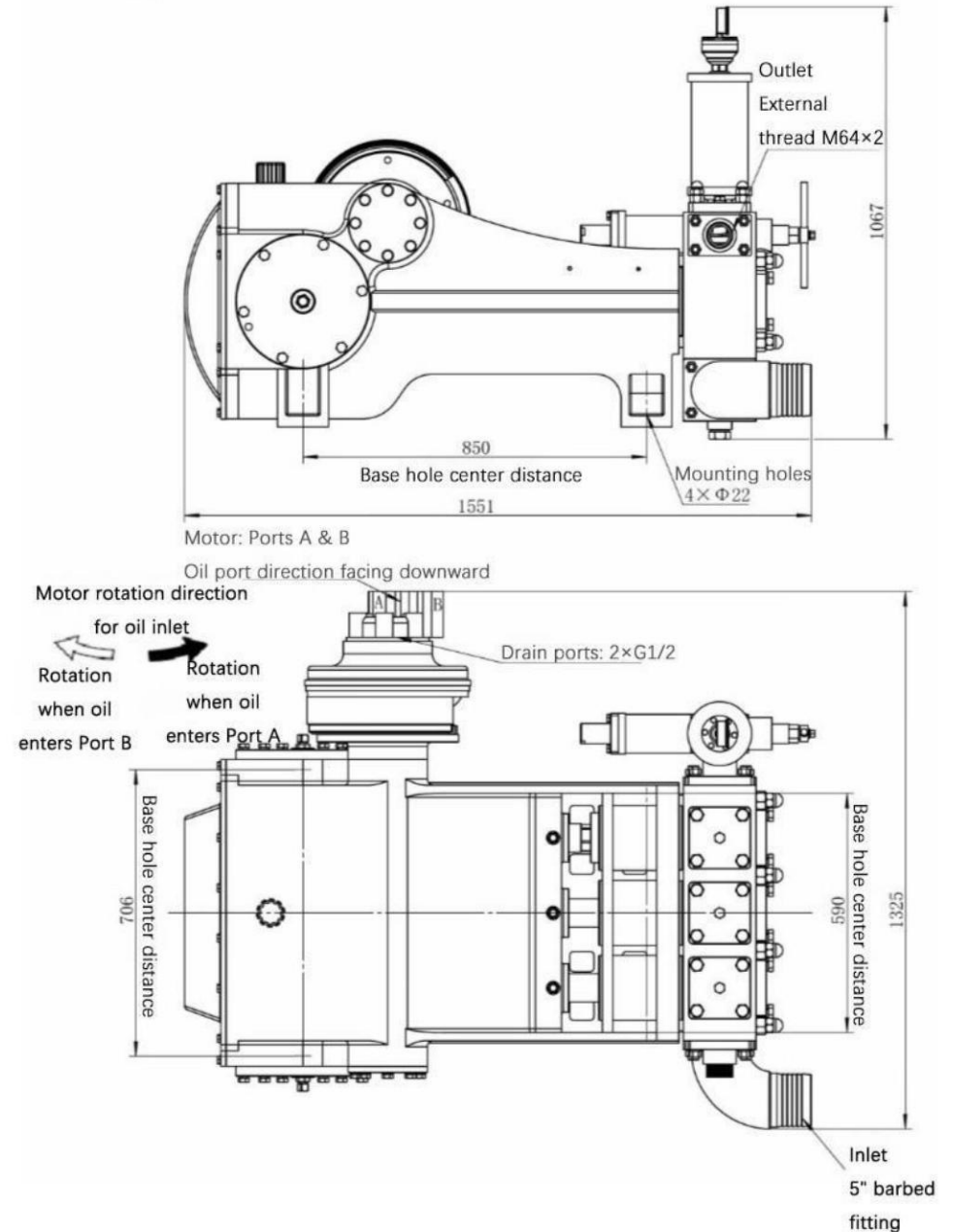


The DXBH-1200 reciprocating pump is a horizontal triplex single-acting piston pump driven by a dual-displacement hydraulic motor. It is primarily designed for use with 150-ton trenchless drilling rigs but can also be employed for other applications such as grouting, mine drainage, and long-distance water delivery. This pump features two flow rates and two pressure settings, enabling gear shifting operations through remote adjustment of the hydraulic motor's flow rate, replacing traditional manual shifting methods. With innovative design and advanced structure, the pump incorporates high-efficiency valves (delivering high volumetric efficiency and low operational noise). It boasts a compact design, aesthetically pleasing appearance, easy installation and maintenance, extended service life for wear-prone parts, and stable performance.

Horizontal triplex reciprocating single acting piston pump	
Stroke(mm)	150
Cylinder diameter(mm)	125
Flow(L/min)	1200 600
Pressure(Mpa)	4 8
Motor speed (r/min)	1075 540
Motor displacement (ml/r)	246 493
Input power(Kw)	100
Maximum suction height (m)	2.5
Inlet connection	Φ 130
Outlet connection	M64 × 2
Dimensions(mm)	1551 × 1325 × 1067
Weight(kg)	1596
Motor model	XHBD4-500/250IDD90
Hydraulic motor model	1750/3500
Hydraulic motor rated pressure (MPa)	25
Maximum motor flow(L/min)	295

The product specifications and images provided may change due to design improvements and upgrades. Please feel free to inquire for more information.

DXBH-1200 Outline Dimension Drawing



DBW-100 (Motor power)

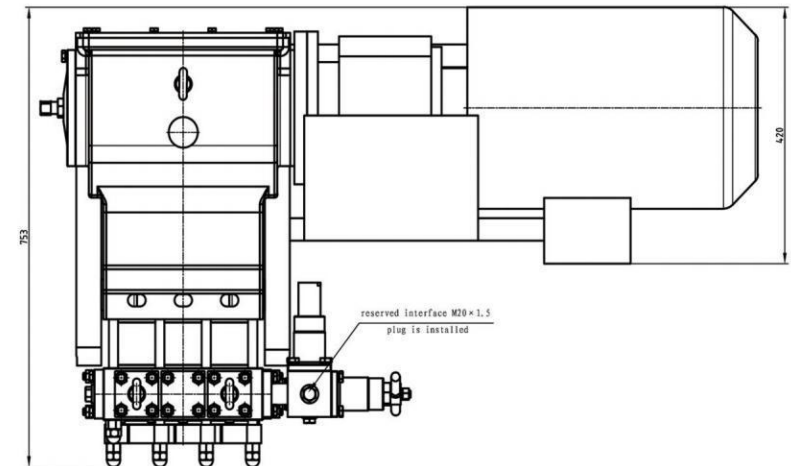
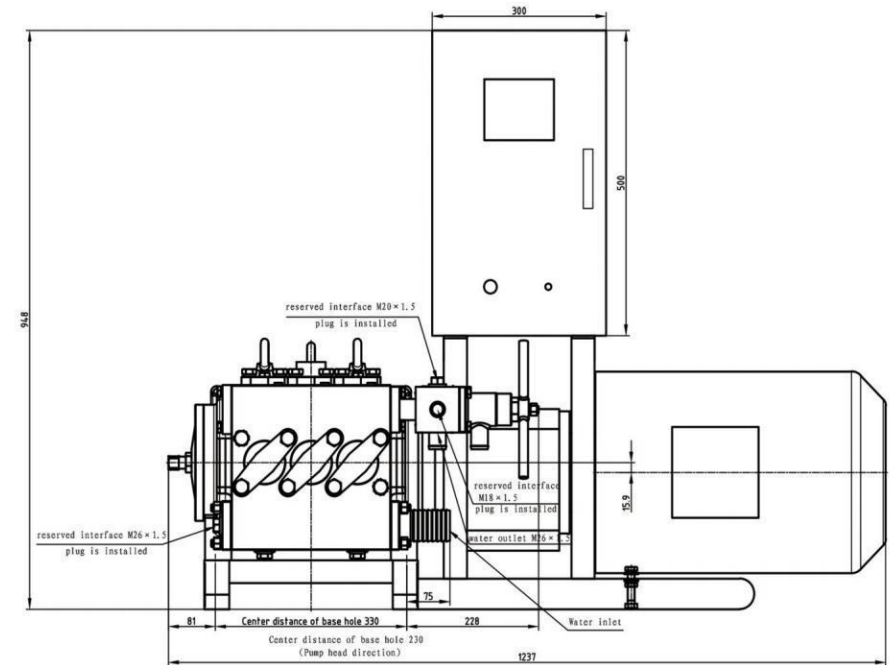


The DBW-100 reciprocating pump is a horizontal triplex reciprocating single-acting piston pump, driven by a variable frequency electric motor through a coupling reduction gear. It is mainly used for conveying flushing fluid to the drill hole during geological core drilling, and can also be used for other purposes such as grouting, sewage discharge, and long-distance water delivery. It can be adapted to different diameters of drilling and backhaul. The design incorporates new concepts, new structures, new materials, and new processes; it has a compact structure, light weight, small size, and beautiful appearance; it is easy to install and maintain; and has the characteristics of high output pressure, long service life of wearing parts, and stable performance.

Horizontal triplex reciprocating single acting piston pump		
Stroke (mm)		60
Cylinder diameter (mm)		55
Flow (L/min)		100
Pressure (MPa)		5
Input speed (r/min)		240
Input power (KW)		10
Dimensions (mm)		1237 × 753 × 948
Weight (kg)		350
Motor model		RF77YVP160M4
Motor power (KW)		11

The product specifications and images provided may change due to design improvements and upgrades. Please feel free to inquire for more information.

DBW-100 Outline Dimension Drawing



DBW-100Q

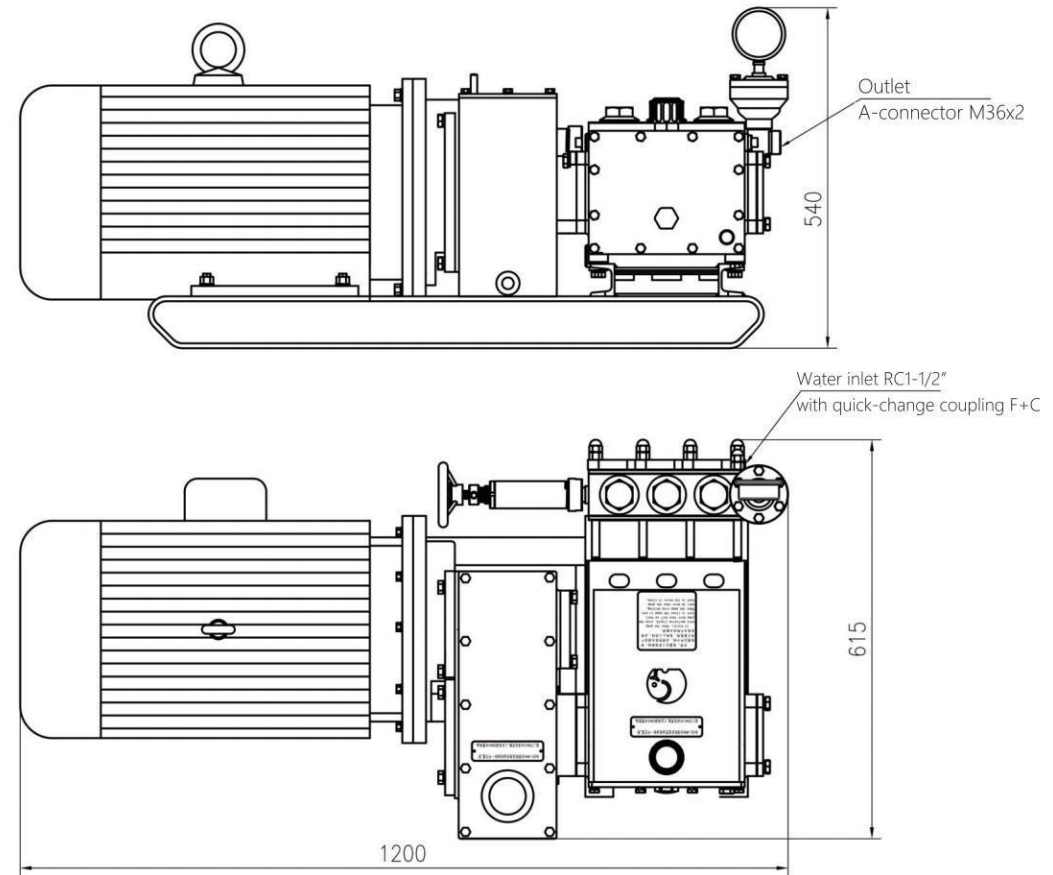


The DBW-100Q reciprocating pump is a horizontal triplex reciprocating single-acting piston pump. It is driven by a three-phase asynchronous motor through a gearbox. It is mainly used to deliver flushing fluid to the drilling hole in geological core drilling, and can also be used for other purposes such as grouting, sewage discharge, and long-distance water delivery. It can be used for drilling and backhaul of different diameters. In the design, new concepts, new structures, new materials, and new processes are adopted. The structure is compact, light in weight, small in size, and beautiful in appearance. It is easy to install and maintain with high output pressure, long service life of vulnerable parts, and stable performance.

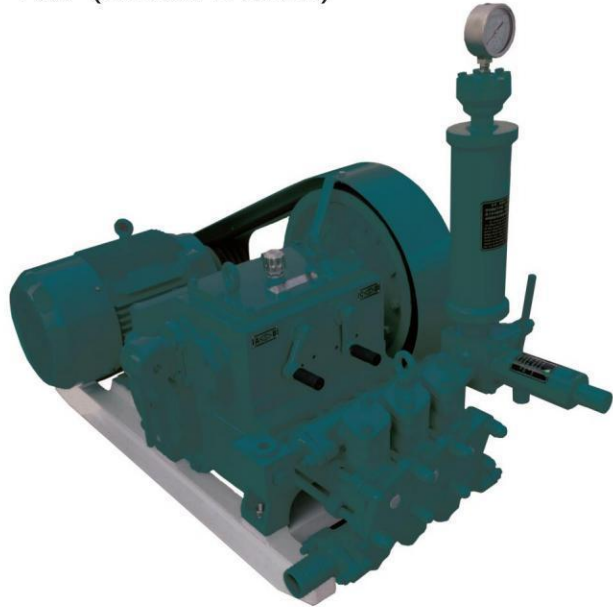
Horizontal triplex reciprocating single acting piston pump	
Stroke (mm)	48
Cylinder diameter (mm)	55
Flow (L/min)	100
Pressure (MPa)	5.5/7
Input speed (r/min)	295
Input power (KW)	14
Dimensions (mm)	1200×615×540
Weight (kg)	290/310
Motor model	Y160-4/B35
Motor power (KW)	11/15

The product specifications and images provided may change due to design improvements and upgrades. Please feel free to inquire for more information.

DBW-100Q Outline Dimension Drawing



DBW-160 (Motor Driven)

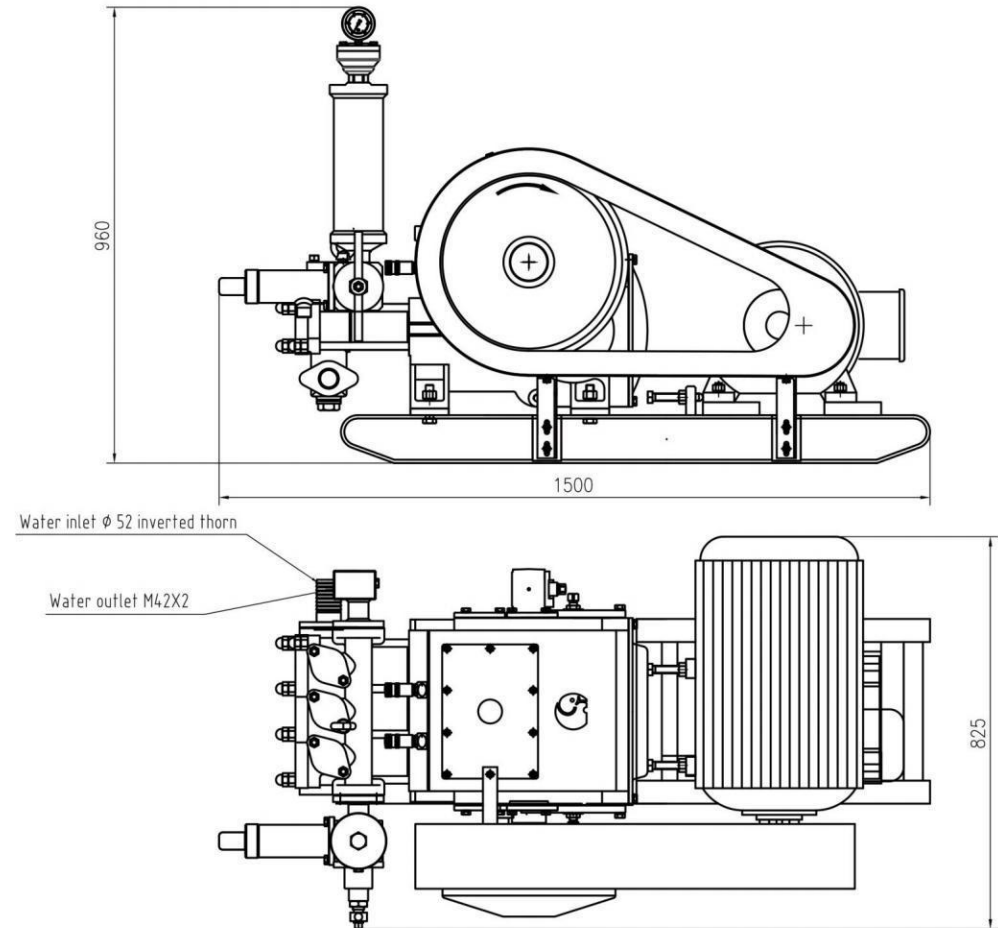


The DBW-160 reciprocating pump is a horizontal triplex reciprocating single-acting piston pump that is powered by electric motor. It is mainly used to convey flushing fluid into the drilling hole during geological core drilling, and can also be used for other applications such as grouting, sewage disposal, and long-distance water delivery. The pump has four flow rates and four pressures, with a wide range of flow rate and pressure variations to accommodate different borehole drilling and backflushing. In its design, new concepts, new structures, new materials, and new processes are adopted. The pump is compact in structure, light in weight, small in size, and aesthetically pleasing. It is easy to install and maintain and features high output pressure, long service life of wearing parts, and stable performance.

Horizontal triplex reciprocating single acting piston pump				
Stroke (mm)	70			
Cylinder diameter (mm)	70			
Flow (L/min)	160	107	67	44
Pressure (MPa)	2.7	4	6.5	10
Input speed (r/min)	540			
Input power (kW)	9			
Dimensions (mm)	1500×825×960			
Weight (kg)	508			
Motor model	YE3-160M-4			
Motor Power (kW)	11			

The product specifications and images provided may change due to design improvements and upgrades. Please feel free to inquire for more information.

DBW-160 Outline Dimension Drawing



DXBH-200E

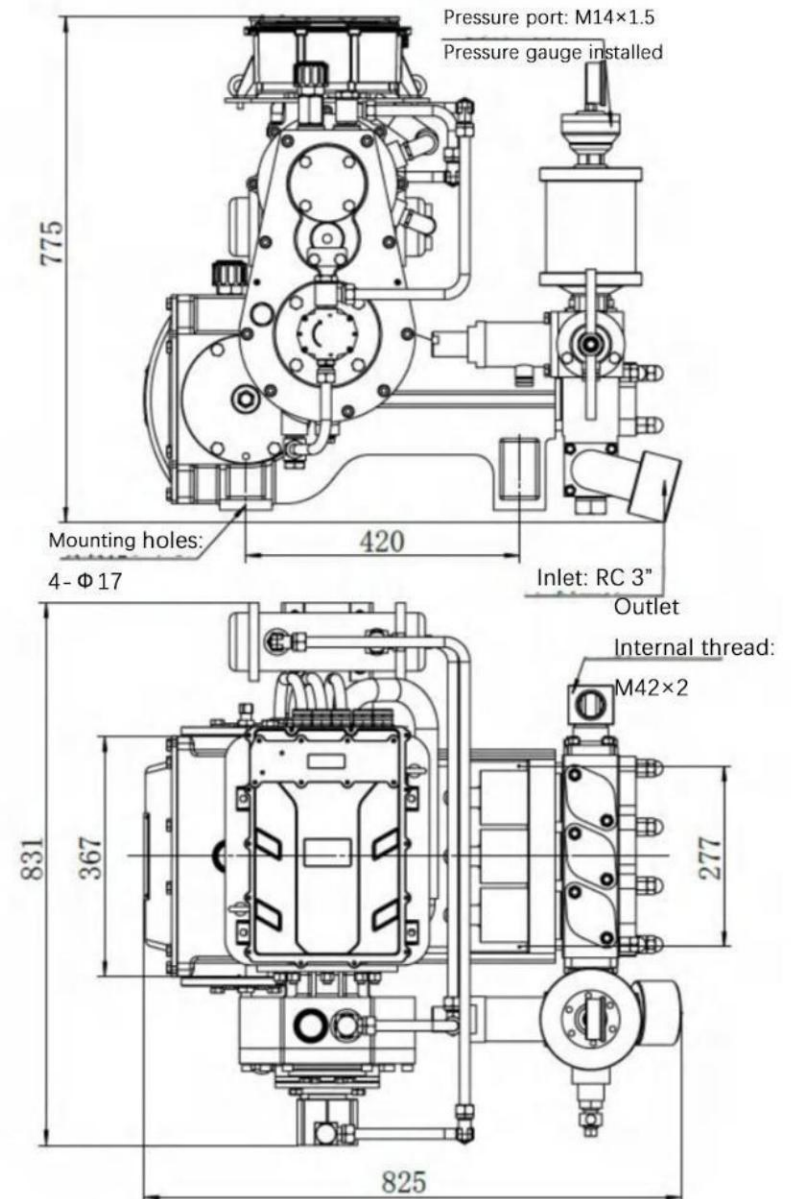


The DXBH-200E reciprocating pump is a horizontal triplex single-acting piston pump, driven by a permanent magnet synchronous motor for high efficiency, energy savings, and environmental friendliness. It is primarily designed for use with 20-ton trenchless drilling rigs but can also be employed in other applications such as grouting, mine drainage, and long-distance water delivery. The pump features a wide range of adjustable flow rates and pressures, with remote stepless speed control via a controller, enabling constant power output during variations in flow and pressure. This eliminates the traditional manual gear-shifting operation mode. Designed with innovative concepts and a modern structure, the pump is compact, aesthetically pleasing, and easy to install and maintain. It offers extended service life for wear-prone parts and ensures stable performance.

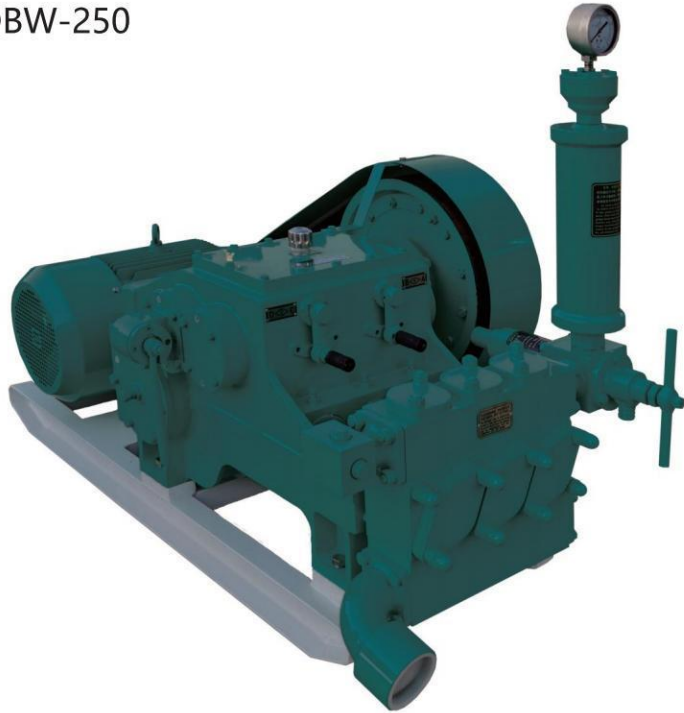
Horizontal triplex reciprocating single acting piston pump	
Stroke(mm)	60
Cylinder diameter(mm)	70
Pump speed(r/min)	145~290
Flow(L/min)	100~200
Pressure((Mpa)	8~4
Input power(Kw)	15.4
Dimensions(mm)	825 × 831 × 775
Weight(kg)	370
Motor Model	TYC24-1750-L120M10
Rated Current / Maximum Current (A)	77.8/140
Rated Power / Peak Power (kW)	24/40.8
Rated Speed / Maximum Speed (r/min)	1750/3500

The product specifications and images provided may change due to design improvements and upgrades. Please feel free to inquire for more information.

DXBH-200E Outline Dimension Drawing



DBW-250

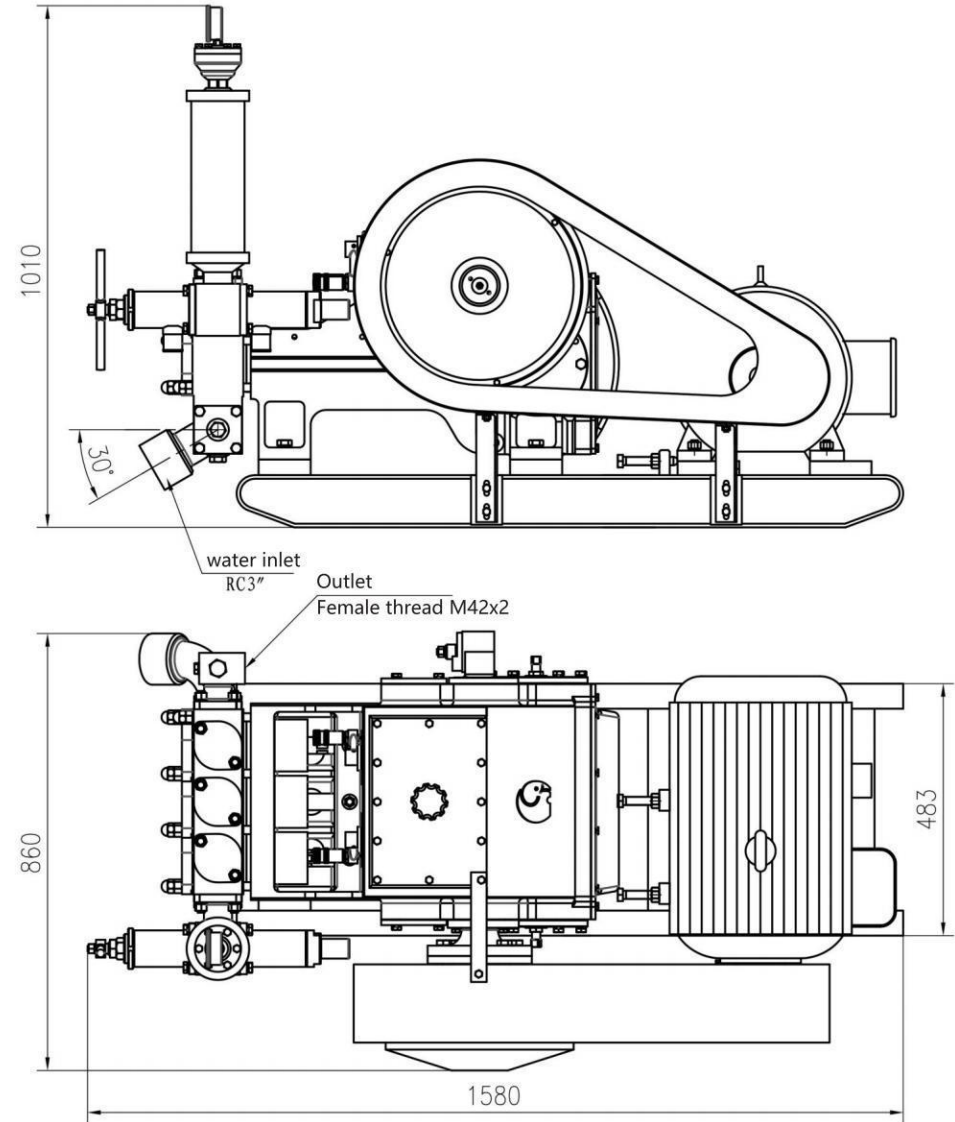


The DBW-250 reciprocating pump is a horizontal triplex reciprocating single-acting piston pump driven by an electric motor. It is mainly used to convey flushing fluid into the borehole during geological core drilling, but can also be used for grouting, sewage discharge, and long-distance water delivery. The pump has four flow rates and four pressures, with a wide range of flow and pressure changes, making it suitable for different borehole diameters. The design adopts new concepts, new structures, new materials, and new processes. It has a compact structure, light weight, small size, and elegant appearance. It is easy to install and maintain, has high output pressure, longer life of vulnerable parts, and stable performance.

Horizontal triplex reciprocating single acting piston pump				
Stroke (mm)	75			
Cylinder diameter (mm)	80			
Flow (L/min)	250	165	122	79
Pressure (MPa)	2.6	4	5.4	8
Input speed (r/min)	420			
Input power (kW)	13			
Dimensions (mm)	1580 × 860 × 1010			
Weight (kg)	670			
Motor model	YE3-160L-4			
Motor Power (kW)	15			

The product specifications and images provided may change due to design improvements and upgrades. Please feel free to inquire for more information.

DBW-250 Outline Dimension Drawing



DBWF-250 (Motor Driven)

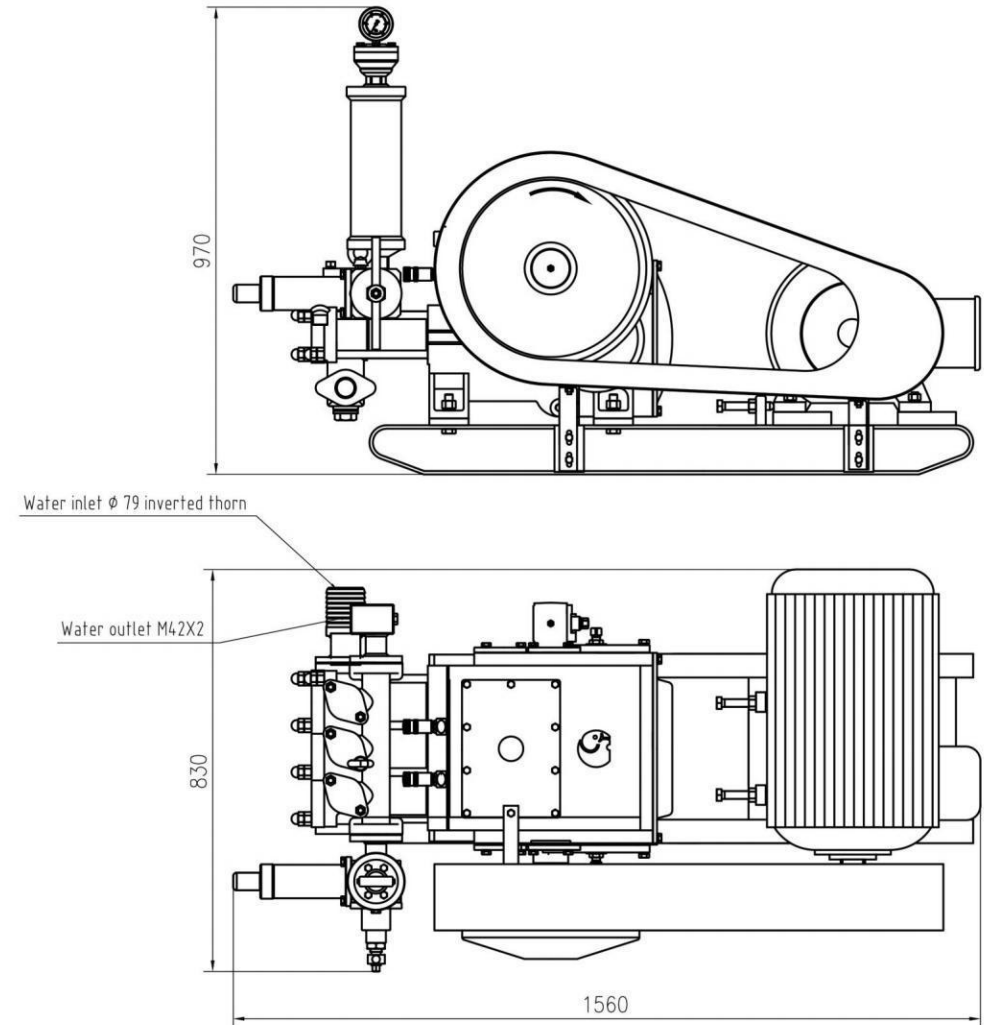


The DBWF-250 reciprocating pump is a horizontal triplex reciprocating single-acting piston pump driven by an electric motor. It is mainly used for delivering flushing fluid into the borehole during geological core drilling, and can also be used for grouting, sewage discharge, and long-distance water supply for other purposes. The pump has four flow rates and four pressures, with a wide range of variations in flow rate and pressure to accommodate different borehole diameters for drilling and backhaul. In its design, new concepts, structures, materials, and processes are applied to create a compact structure, light weight, small size, and attractive appearance, as well as convenience in installation and maintenance. It features high output pressure, longer lifespan of vulnerable parts, and stable performance.

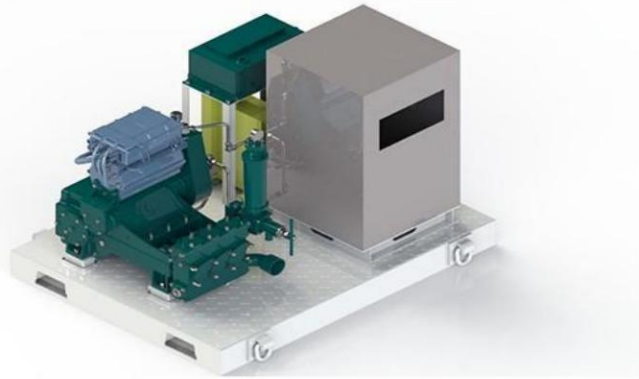
Horizontal triplex reciprocating single acting piston pump				
Stroke (mm)	70			
Cylinder diameter (mm)	75			
Flow (L/min)	250	158	100	69
Pressure (MPa)	2.5	4	6	9
Input speed (r/min)	727			
Input power (kW)	13			
Dimensions (mm)	1560 × 830 × 970			
Weight (kg)	560			
Motor model	YE3-160L-4			
Motor Power (kW)	15			

The product specifications and images provided may change due to design improvements and upgrades. Please feel free to inquire for more information.

DBWF-250 Outline Dimension Drawing



DXBH-300EQ

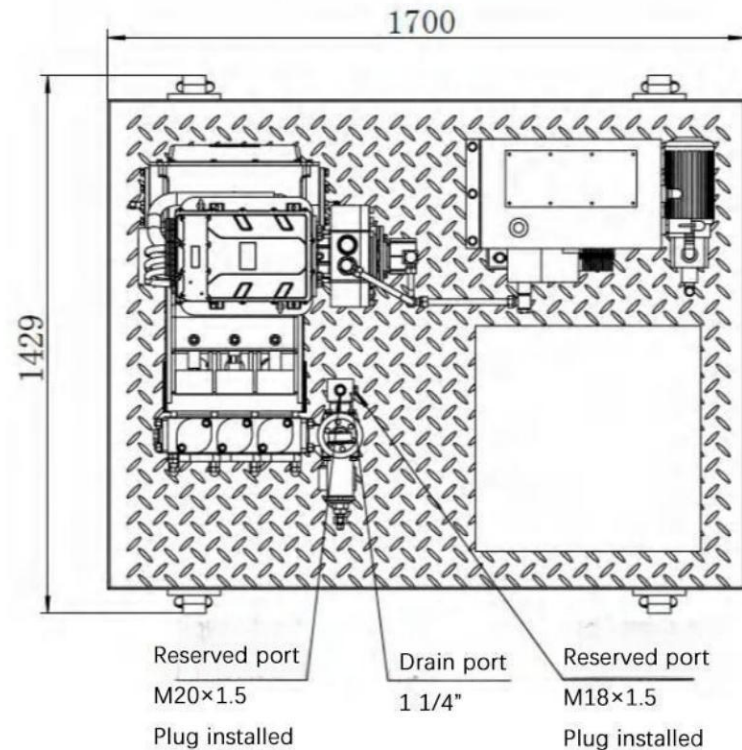
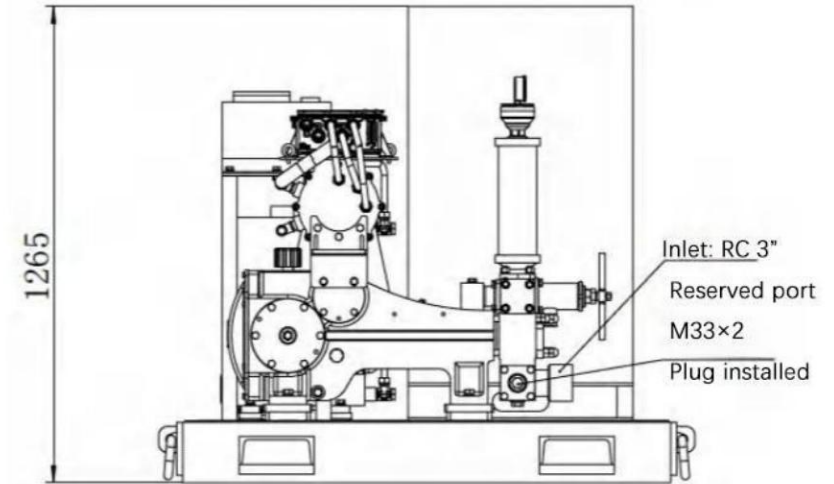


The DXBH-300EQ reciprocating pump is a horizontal triplex single-acting piston pump, driven by a permanent magnet synchronous motor for high efficiency, energy savings, and environmental friendliness. It is primarily designed for use with 30-ton trenchless drilling rigs but can also be employed in other applications such as grouting, mine drainage, and long-distance water delivery. This pump features a wide range of adjustable flow rates and pressures, enabling remote stepless speed regulation via a controller. The flow and pressure variations can maintain constant power output, replacing traditional manual gear-shifting operations. With innovative design concepts and a compact structure, the pump boasts an aesthetically pleasing appearance, easy installation and maintenance, extended service life for wear-prone parts, and stable performance.

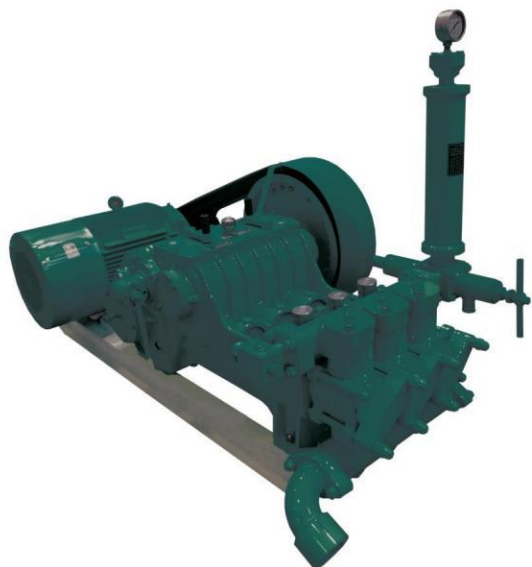
Horizontal triplex reciprocating single acting piston pump	
Stroke(mm)	75
Cylinder diameter(mm)	80
Pump speed(r/min)	133~266
Flow(L/min)	150~300
Pressure(Mpa)	8~4
Input power(Kw)	23
Dimensions(mm)	1700 × 1429 × 1265
Weight(kg)	1050
Motor Model	TYC24-1750-L120M10
Rated Current / Maximum Current (A)	77.8/140
Rated Power / Peak Power (kW)	24/40.8
Rated Speed / Maximum Speed (r/min)	1750/3500

The product specifications and images provided may change due to design improvements and upgrades. Please feel free to inquire for more information.

DXBH-300EQ Outline Dimension Drawing



DBW-320 (Motor Driven)

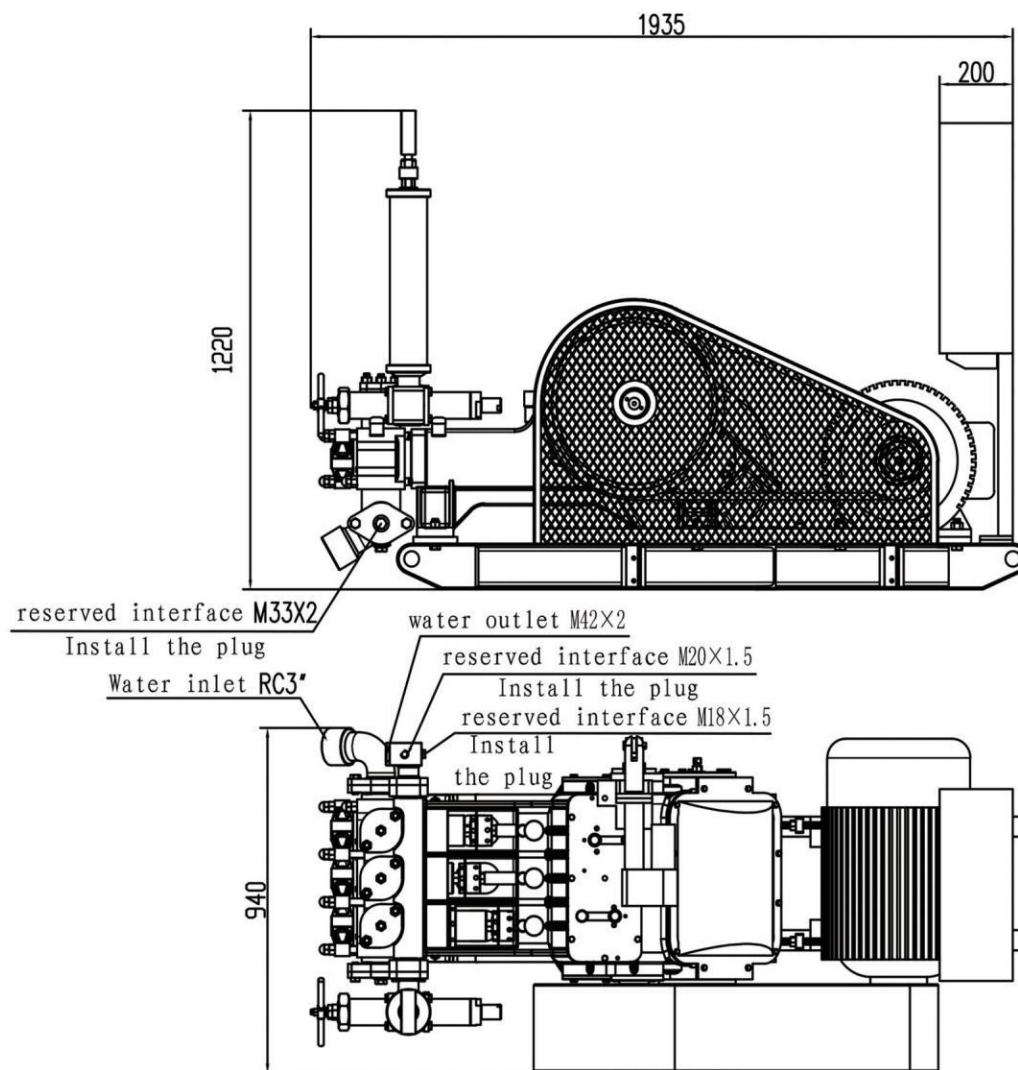


The DBW-320 reciprocating pump is a horizontal triplex reciprocating single-acting plunger pump driven by an electric motor. It is mainly used in geological core drilling to deliver washing fluid into the borehole and can also be used for other purposes such as grouting, drainage, and long-distance water delivery. This pump has four flow rates and four pressures, with a wide range of flow and pressure changes, making it suitable for different hole sizes for drilling and backwashing. It adopts new concepts, new structures, new materials, and new processes in its design, with a compact structure, light weight, small size, attractive appearance, easy installation and maintenance, and has the characteristics of high output pressure, long service life of vulnerable parts, and stable performance.

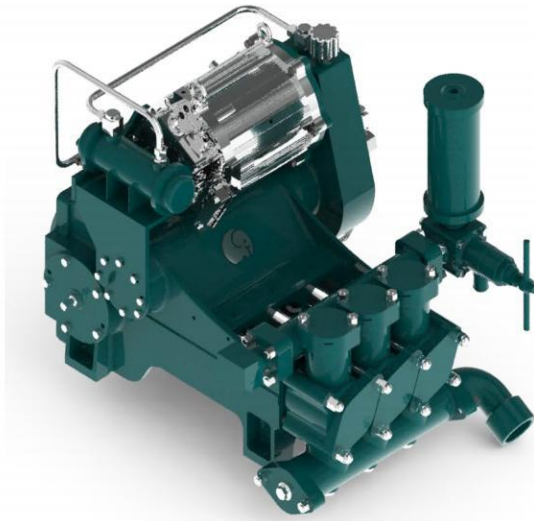
Horizontal triplex reciprocating single acting piston pump				
Stroke (mm)	110			
Cylinder diameter (mm)	80			
Flow (L/min)	320	230	165	118
Pressure (MPa)	4	5	6	8
Input speed (r/min)	535			
Input power (KW)	27			
Dimensions (mm)	1870 × 940 × 1240			
Weight (kg)	1000			
Motor model	Y200L-4-B3			
Motor Power (KW)	30			

The product specifications and images provided may change due to design improvements and upgrades. Please feel free to inquire for more information.

DBW-320 Outline Dimension Drawing



DXBH-400E (Hydraulic Motor Driven)

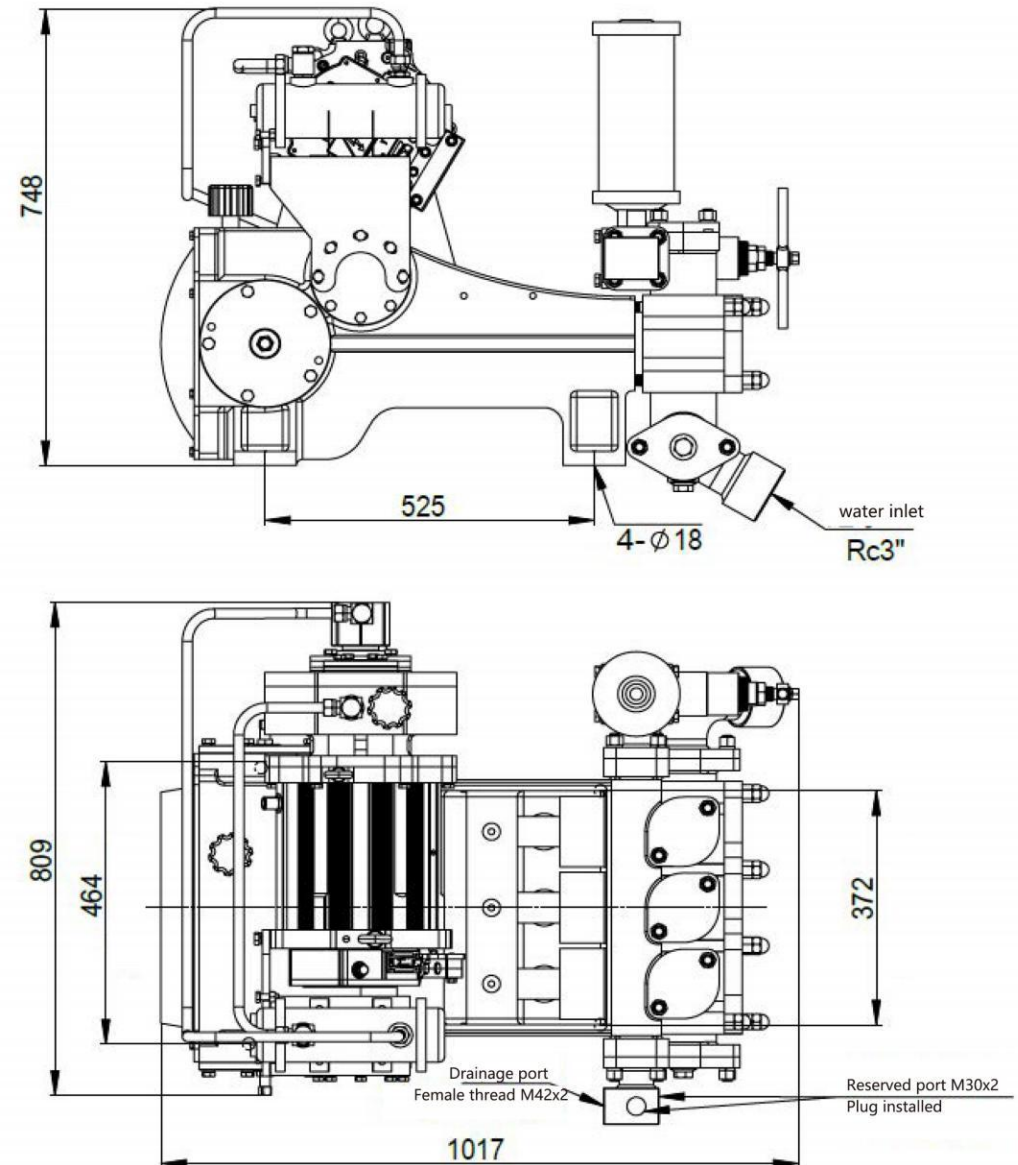


The DXBH-400E reciprocating pump is a horizontal triplex reciprocating single-acting plunger pump. It is driven by a permanent magnet synchronous motor, and is highly efficient, energy-saving, and environmentally friendly. It is mainly used in conjunction with non-excavation drilling machines of around 65 tons, and can also be used for other purposes such as grouting, mine drainage, and long-distance transportation. The pump has a wide range of flow and pressure adjustment, and can achieve constant power through remote stepless speed control by a controller. This changes the traditional manual shift operation mode and adopts new concepts and new structures. It has a compact design, easy installation and maintenance, and long service life of vulnerable parts, with stable performance.

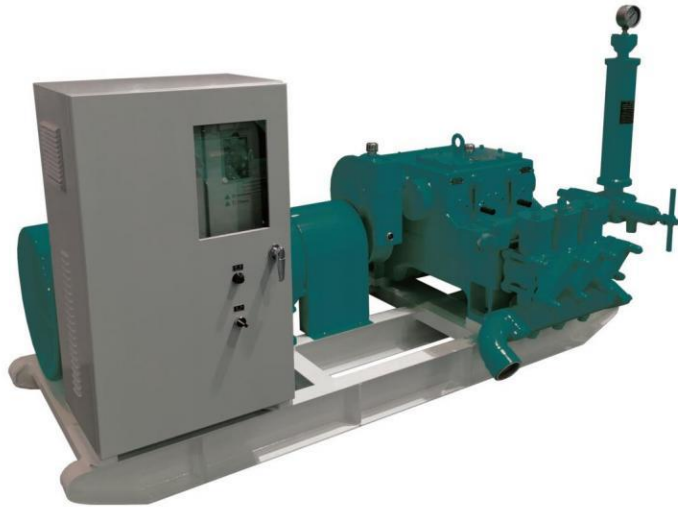
Horizontal triplex reciprocating single acting piston pump	
Stroke (mm)	80
Cylinder diameter (mm)	95
Flow (L/min)	400 ~ 200
Pressure (MPa)	4 ~ 8
Input speed (r/min)	118 ~ 235
Input power (KW)	32
Dimensions (mm)	1017×809×748
Weight (kg)	720
Hydraulic motor model	TZ210XSLG23A
Hydraulic motor pressure (MPa)	35/50
Maximum motor flow (L/min)	1700/8000

The product specifications and images provided may change due to design improvements and upgrades. Please feel free to inquire for more information.

DXBH-400E Outline Dimension Drawing



DBW-600 (Motor Driven)

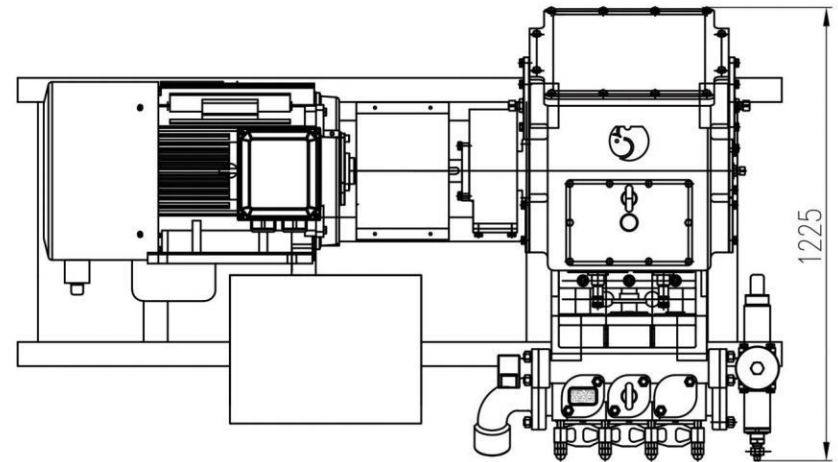
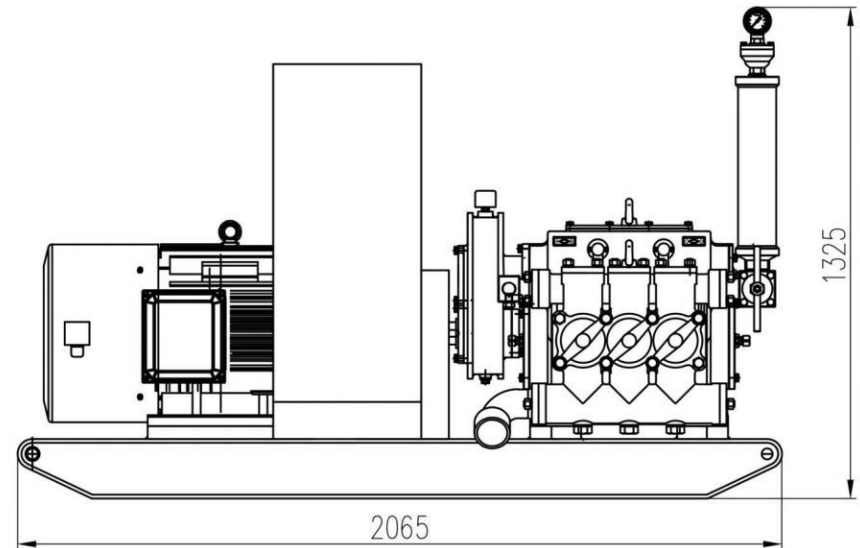


The DBW-600 reciprocating pump is a horizontal, triplex reciprocating single-acting piston pump that is driven by a variable frequency electric motor and transmitted through a coupling reducer. It is mainly used to transport flushing fluid into the borehole during geological core drilling, and can also be used for grouting, drainage, and long-distance water delivery. The pump has four flow rates and four pressures, and each gear can be infinitely adjusted through the frequency converter. The range of flow rate and pressure changes is large, which can be suitable for drilling and backhaul operations with different diameters. The design adopts new concepts, new structures, new materials, and new processes; the structure is compact, light in weight, small in size, and beautiful in appearance; it is easy to install and maintain; and it has the characteristics of high output pressure, long service life of vulnerable parts, and stable performance.

Horizontal triplex reciprocating single acting piston pump				
Stroke (mm)	110			
Cylinder diameter (mm)	100			
Flow (L/min)	600	415	280	195
Pressure (MPa)	3.5	5	7.5	10
Input speed (r/min)	550			
Input power (KW)	42			
Dimensions (mm)	2065 × 1225 × 1325			
Weight (kg)	1280			
Motor model	YVF2 225M-4			
Motor Power (KW)	45			

The product specifications and images provided may change due to design improvements and upgrades. Please feel free to inquire for more information.

DBW-600 Outline Dimension Drawing

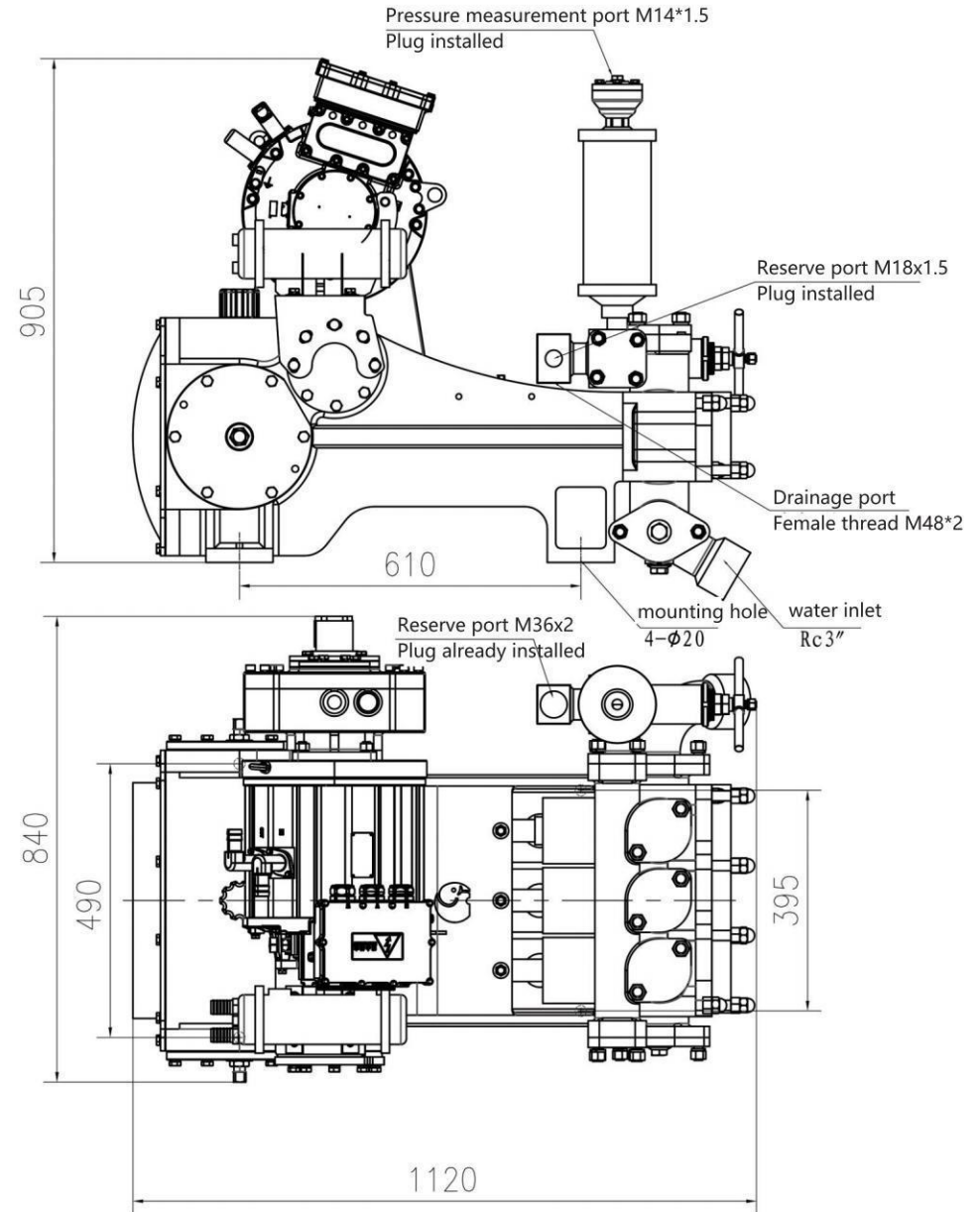




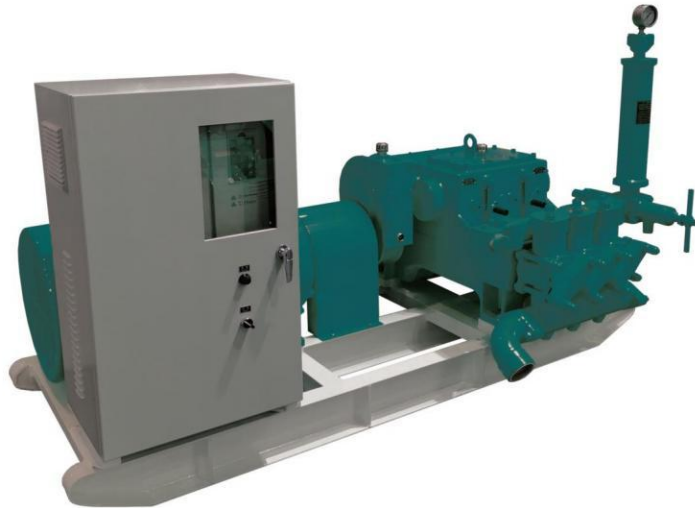
The DXBH-600E reciprocating pump is a horizontal triplex reciprocating single-acting piston pump that is driven by a permanent magnet synchronous motor for high efficiency, energy saving, and environmental protection. It is mainly used for matching with non-excavation drilling machines of around 65 tons, but can also be used for other purposes such as grouting, mine drainage, and long-distance water delivery. This pump has a large range of flow and pressure adjustment, and can achieve constant power by remote infinitely variable speed control through the controller, changing the traditional manual gear shifting operation mode. The pump adopts a new concept and a new structure, with a compact structure, beautiful appearance, convenient installation and maintenance, longer service life of vulnerable parts, and stable performance.

Horizontal triplex reciprocating single acting piston pump	
Stroke (mm)	110
Cylinder diameter (mm)	100
Flow (L/min)	600 ~ 300
Pressure (MPa)	3.5 ~ 7
Input speed (r/min)	3500 ~ 1750
Input power (KW)	42
Dimensions (mm)	1120×1007×1017
Weight (kg)	850
Hydraulic motor model	YQW4-160Z
Hydraulic motor pressure (MPa)	55
Maximum motor flow (L/min)	3500

The product specifications and images provided may change due to design improvements and upgrades. Please feel free to inquire for more information.



DBW-800 (Motor Driven)

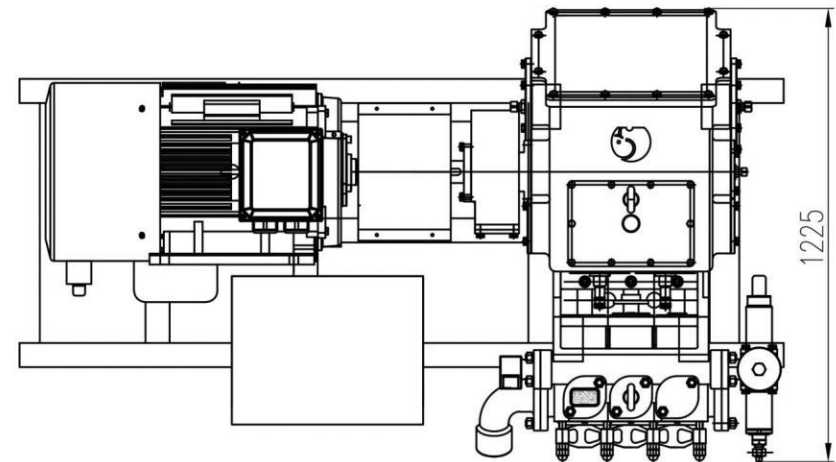
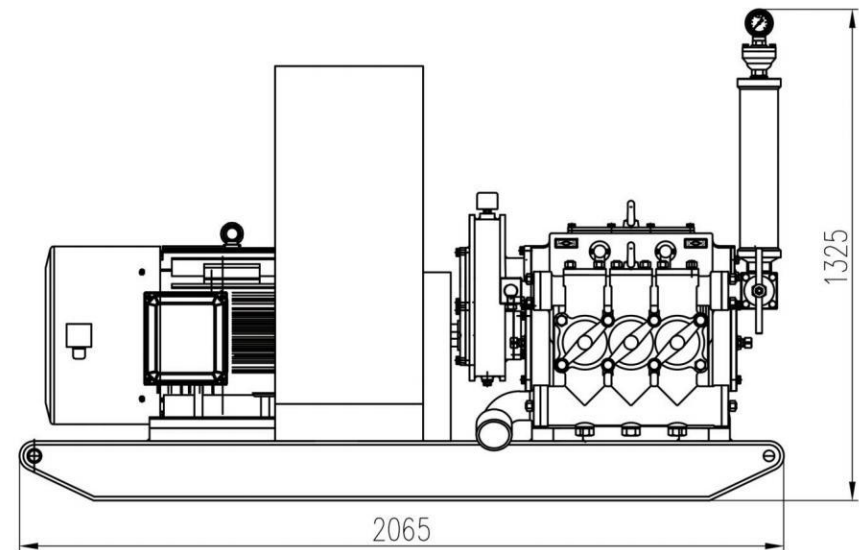


The DBW-800 reciprocating pump is a horizontal triplex reciprocating single-acting piston pump that is driven by a variable frequency electric motor and transmitted through a coupling reducer. It is mainly used to deliver flushing fluid into the borehole during geological core drilling, and can also be used for other purposes such as grouting, sewage discharge, and long-distance water delivery. The pump has four flow rates and four pressures, and all gears can be infinitely adjusted by the frequency converter. The flow and pressure range is large and can be applied to different hole sizes for drilling and backpulling. The design adopts new concepts, new structures, new materials, and new processes; the structure is compact, light in weight, small in size, and beautiful in appearance; installation and maintenance are convenient; it has the characteristics of high output pressure, long service life of vulnerable parts, and stable performance.

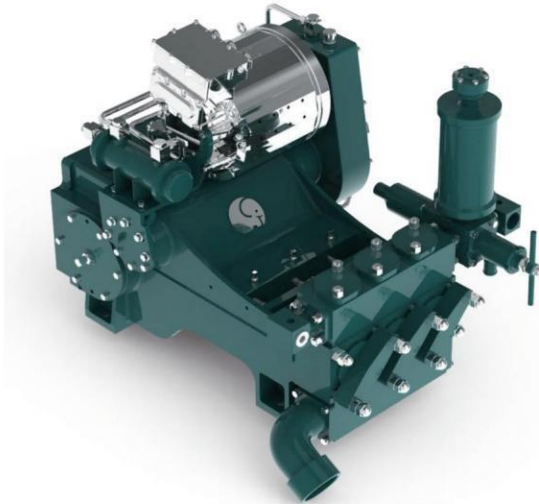
Horizontal triplex reciprocating single acting piston pump				
Stroke (mm)	135			
Cylinder diameter (mm)	110			
Flow (L/min)	800	550	370	260
Pressure (MPa)	3.5	5	7.5	10
Input speed (r/min)	500			
Input power (KW)	55			
Dimensions (mm)	2065 × 1360 × 1340			
Weight (kg)	1880			
Motor model	YVF2 250M-4			
Motor Power (KW)	55			

The product specifications and images provided may change due to design improvements and upgrades. Please feel free to inquire for more information.

DBW-800 Outline Dimension Drawing



DXBH-800E

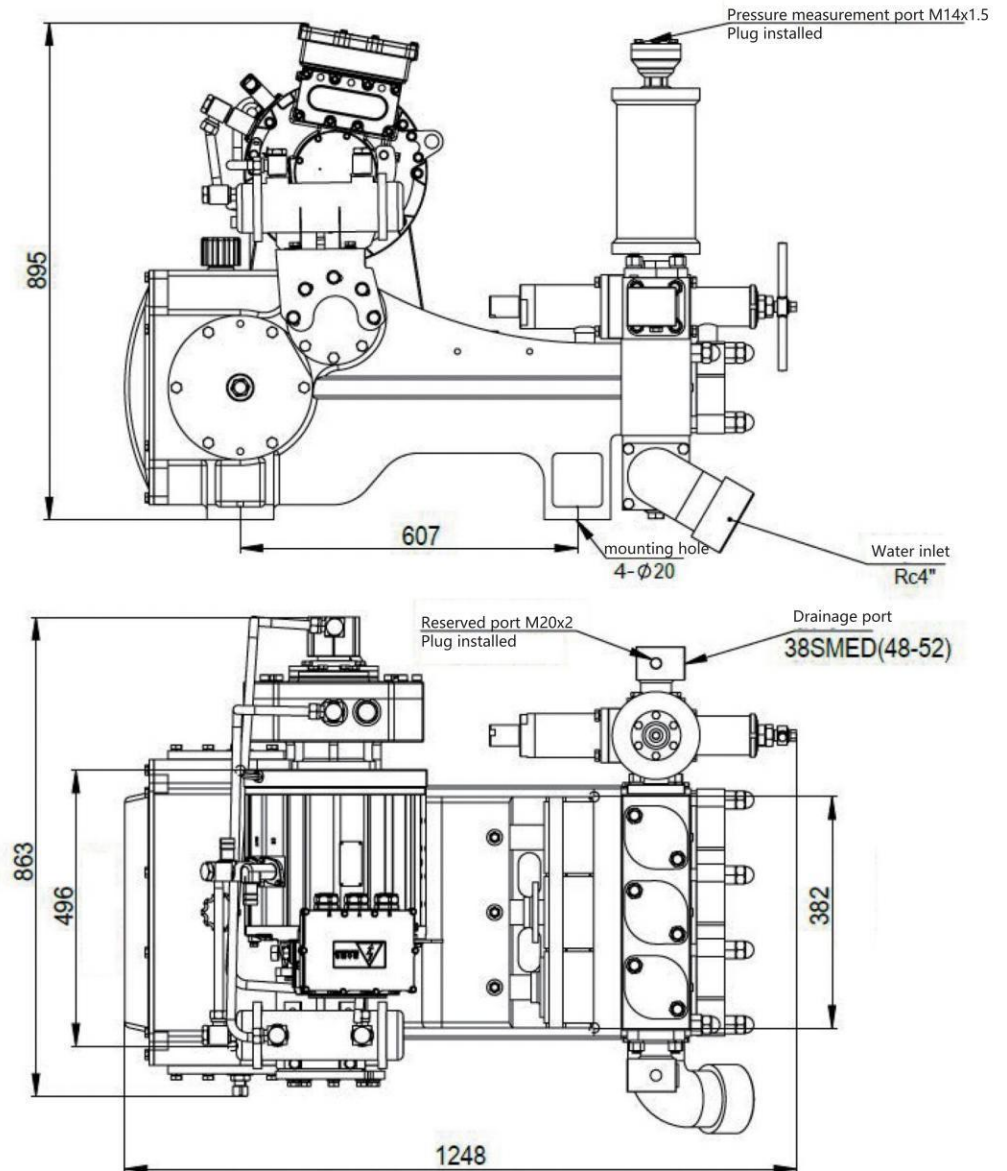


The DXBH-800E reciprocating pump is a horizontal triplex reciprocating single-acting piston pump, which is driven by a permanent magnet synchronous motor and is highly efficient, energy-saving, and environmentally friendly. It is mainly used in conjunction with non-excavation drilling machines of about 65 tons, and can also be used for other purposes such as grouting, mine drainage, and long-distance water delivery. The flow rate and pressure adjustment range of this pump is large, and it can be remotely and infinitely speed-controlled through a controller. The flow rate and pressure changes can achieve constant power, which changes the traditional manual gear shift operation mode. This pump adopts a new concept and a new structure, which is compact in structure, beautiful in appearance, easy to install and maintain, and has a longer service life of vulnerable parts and stable performance.

Horizontal triplex reciprocating single acting piston pump	
Stroke (mm)	110
Cylinder diameter (mm)	110
Flow (L/min)	800 ~ 400
Pressure (MPa)	3.5 ~ 7
Input speed (r/min)	127~ 255
Input power (KW)	55
Dimensions (mm)	1248×863×895
Weight (kg)	990
Hydraulic motor model	YQW4-160Z
Hydraulic motor pressure (MPa)	55
Maximum motor flow (L/min)	1750/3500

The product specifications and images provided may change due to design improvements and upgrades. Please feel free to inquire for more information.

DXBH-800E Outline Dimension Drawing



DBW-850/5S

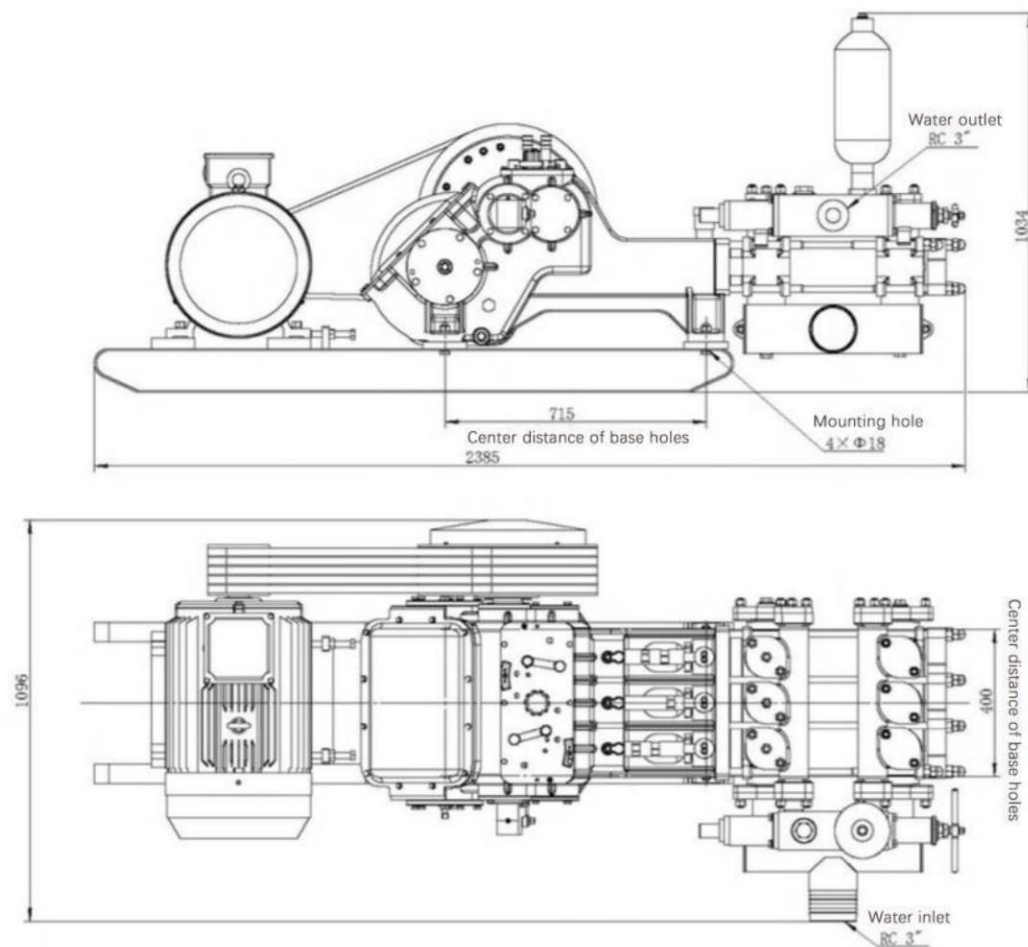


The DBW-850/5S reciprocating pump is a horizontal triplex double-acting piston pump driven by an electric motor. It is primarily used for circulating flushing fluid in geological core drilling operations, as well as for other applications such as grouting, sewage discharge, and long-distance water delivery. This pump offers four flow rates and four pressure levels, with a wide range of adjustments to accommodate drilling and pull-back operations for different borehole diameters. The design incorporates modern concepts, utilizing new structures, materials, and manufacturing techniques. It features a compact structure, lightweight construction, small footprint, and aesthetically pleasing appearance. Installation and maintenance are convenient, and the pump boasts high output pressure, extended service life for wear-prone parts, and stable performance.

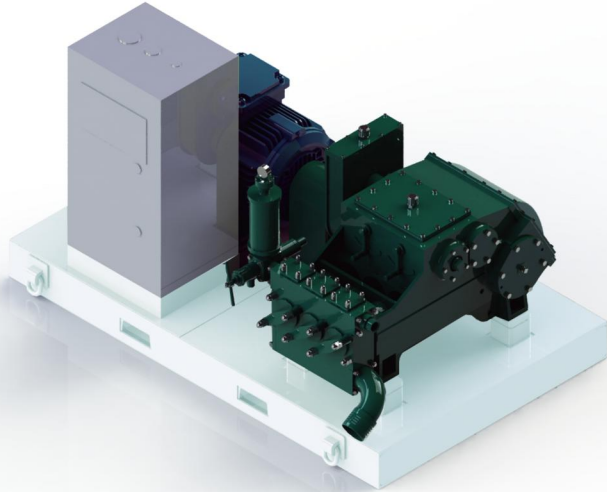
Horizontal triplex reciprocating single acting piston pump	
Stroke(mm)	110
Cylinder diameter(mm)	95
Pump speed(r/min)	203 145 103 74
Flow(L/min)	865 618 429 315.5
Pressure(Mpa)	1.8 2.5 3.5 5
Motor Power(Kw)	30
Maximum Suction Height(m)	2.5
Inlet Connection	Rc 3
Outlet Connection	M42 x 2
Dimensions(mm)	2385 x 1096 x 1034
Weight(kg)	650
Motor Model	TYC32-1750-L160M12
Drive Connection Method	Motor + Pulley

The product specifications and images provided may change due to design improvements and upgrades. Please feel free to inquire for more information.

DBW-850/5S Outline Dimension Drawing



DBW-1000 (Motor Driven)

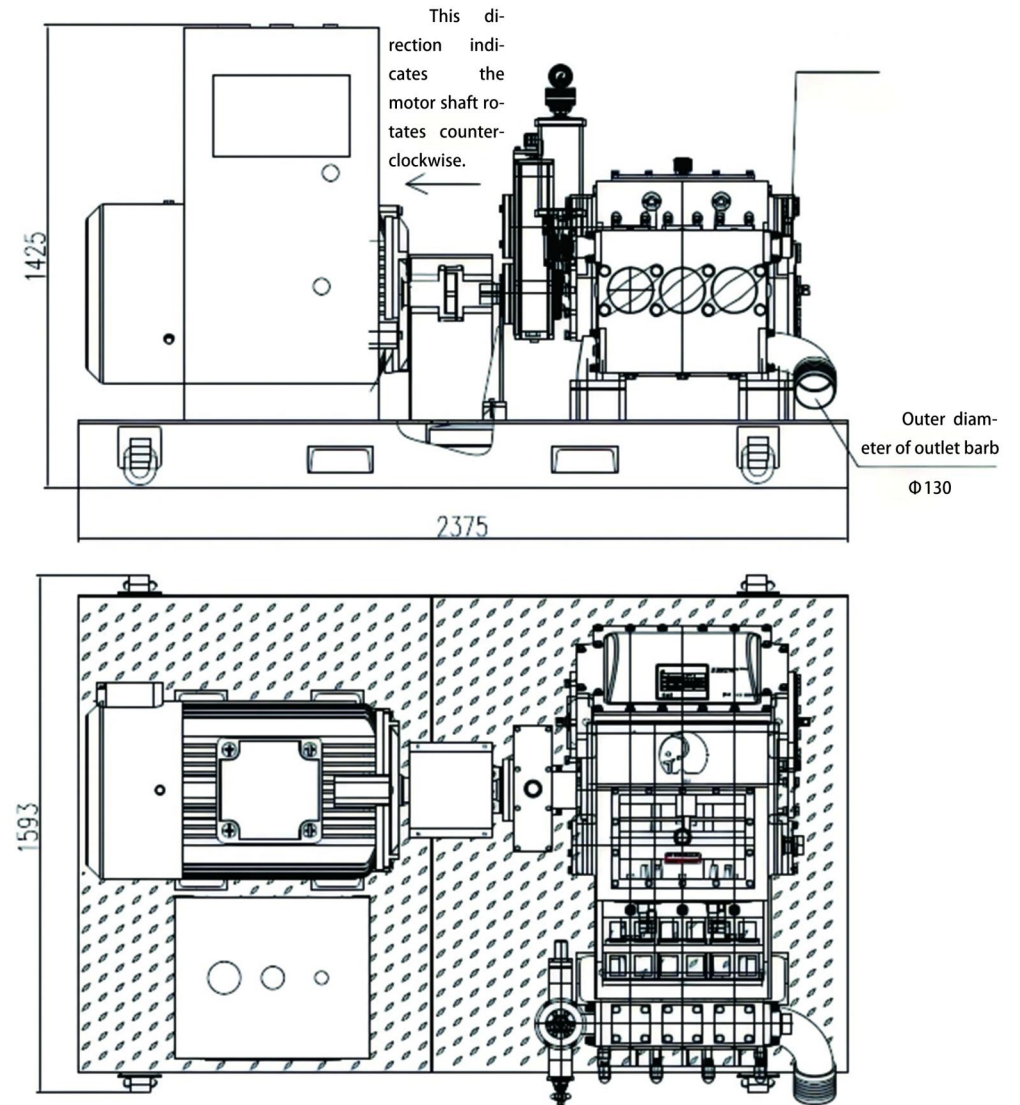


The DBW-1000 reciprocating pump is a horizontal triplex single-acting piston pump driven by an electric motor, offering high efficiency, energy savings, and environmental friendliness. Primarily designed for use with approximately 100-ton trenchless drilling rigs, it can also serve other applications such as grouting, mine drainage, and long-distance water delivery. This pump offers four flow rates and four pressure settings, featuring a wide range of flow and pressure variations to accommodate drilling and back-hauling operations across different borehole diameters. Its design incorporates innovative concepts, utilizing new structures, materials, and manufacturing techniques. It boasts a compact structure, lightweight construction, small footprint, and aesthetically pleasing appearance. Installation and maintenance are straightforward. Key characteristics include high output pressure, extended service life of wear parts, and stable performance.

Horizontal triplex reciprocating single acting piston pump				
Stroke (mm)	140			
Cylinder diameter (mm)	115			
Pump speed (r/min)	77	118	150	230
Flow (L/min)	335	515	650	1000
Pressure (Mpa)	10	7.5	6	4
Input power (KW)	76			
Maximum input torque (N · m)	1823			
Dimensions (mm)	2375 × 1593 × 1425			
Weight (kg)	1660			
Motor model	YVF-280M-4 Variable-frequency motor			
Motor rated power (KW)	90			
Motor rated speed (r/min)	1485			

The product specifications and images provided may change due to design improvements and upgrades. Please feel free to inquire for more information.

DBW-1000 Outline Dimension Drawing



DBW-1200 (Motor Driven)

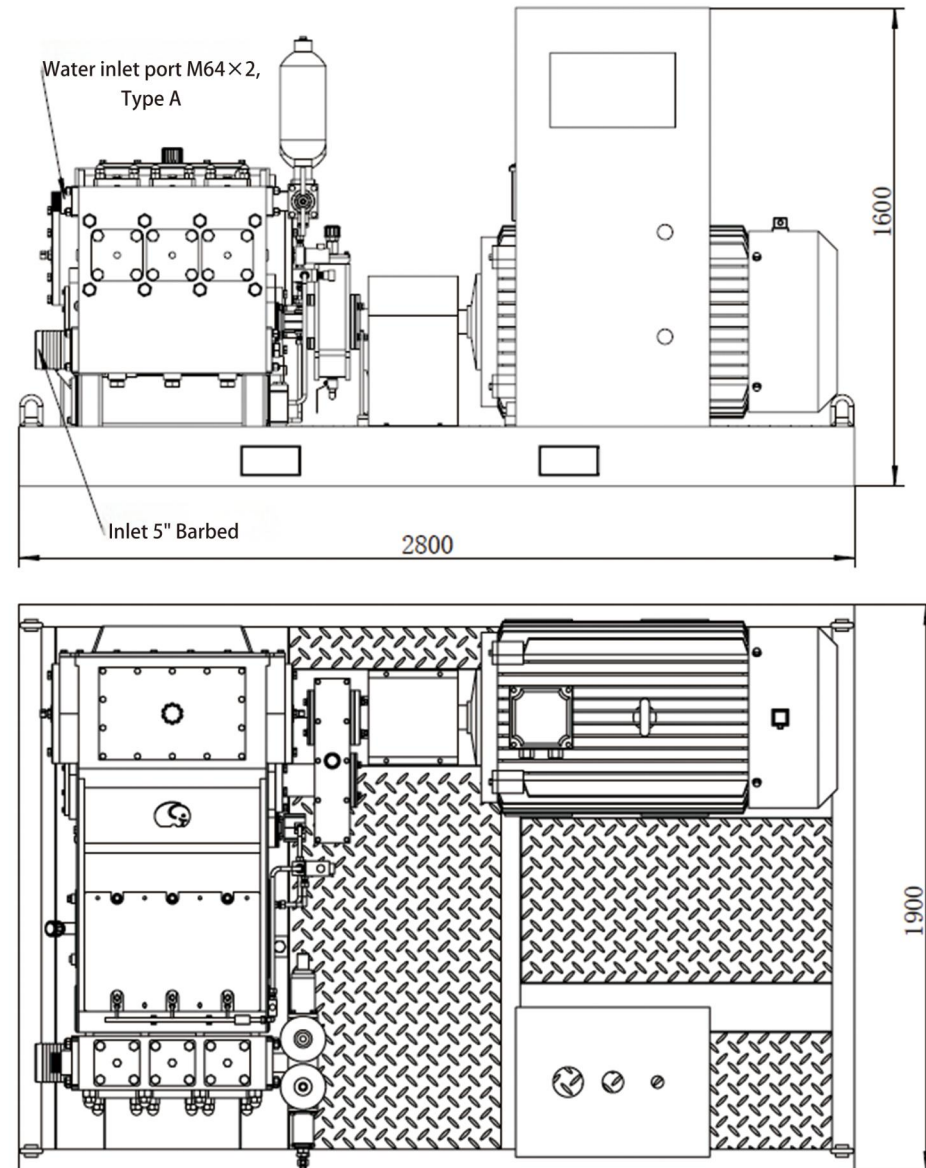


The DBW-1200 reciprocating pump is a horizontally mounted, triple-stage, single-acting piston pump driven by an electric motor. It features high efficiency, energy savings, and environmentally friendly, pollution-free operation. Primarily designed for approximately 120-ton class trenchless drilling rigs, it is also suitable for grouting, mine dewatering, long-distance water conveyance, and other applications. The pump offers a wide range of flow and pressure adjustments to accommodate drilling operations with varying borehole diameters and backfilling requirements. Incorporating innovative design concepts, it utilizes new structural configurations, materials, and manufacturing techniques, resulting in a compact structure, lightweight construction, minimal footprint, and aesthetically pleasing appearance. Installation, maintenance, and operation are straightforward, with core features including high output pressure, extended service life of wear parts, and stable, reliable performance.

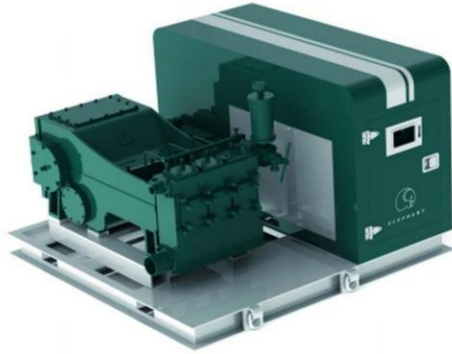
Horizontal triplex reciprocating single acting piston pump	
Stroke (mm)	150
Cylinder diameter (mm)	125
Pump speed (r/min)	236
Flow (L/min)	1200
Pressure (Mpa)	5
Rated speed (r/min)	1490
Motor power (KW)	132
Dimensions (mm)	2800 × 1950 × 1600
Weight (kg)	3980
Motor type	YVP-315M-4-132KW B3
Maximum water absorption height (m)	2.5

The product specifications and images provided may change due to design improvements and upgrades. Please feel free to inquire for more information.

DBW-1200 Outline Dimension Drawing



DBWH-1500



The DBWH-1500 reciprocating pump is a horizontal triplex single-acting piston pump driven by a permanent magnet synchronous motor, offering high efficiency, energy savings, and environmental friendliness. It is primarily designed for use with 150-ton trenchless drilling rigs but can also be employed for other applications such as grouting, mine drainage, and long-distance water delivery. This pump features a wide range of adjustable flow rates and pressures, enabling remote stepless speed regulation via a controller. The flow and pressure variations can maintain constant power output, replacing traditional manual gear-shifting operations. With innovative design concepts and a compact structure, the pump boasts an aesthetically pleasing appearance, easy installation and maintenance, extended service life for wear-prone parts, and stable performance.

Horizontal triplex reciprocating single acting piston pump	
Stroke(mm)	150
Cylinder diameter(mm)	140
Flow(L/min)	1500-465
Pressure(Mpa)	4-10
Rated power(Kw)	150
Dimensions(mm)	2100 × 2100 × 1500
Weight(kg)	3800
Power unit	Permanent Magnet Synchronous Motor
Transmission System	Parallel Shaft Gearbox
Control Method	Wireless and Wired Remote Control, Display Monitoring, Local Control

The product specifications and images provided may change due to design improvements and upgrades. Please feel free to inquire for more information.

DBWH-1500 Outline Dimension Drawing

